

DOCUMENT 00 90 30
ADDENDUM No. 3

PART 1 GENERAL

1.1 DOCUMENT INCLUDES

- A. Changes to the Bid Documents.
- B. Changes to Drawings.

1.2 CONSTRUCTION CONTRACT

- A. The Construction Contract is known as:
SA009 – CIP – 12TH ST/CENTURY DR – PHASE 1
- B. Date of this Addendum: 2/13/2026



PART 2 CHANGES

2.1 CHANGES TO PRIOR ADDENDA

- A. None.

2.2 CHANGES TO BIDDING REQUIREMENTS

- A. 00 41 10 Bid Schedule No 1 - Updated Bid Item 34 "1" Mill and Overlay" to "2" Mill and Overlay".
- B. 00 41 10 Part 3.35 Bid Item 34, 2" Mill and Overlay. Updated part B to change the thickness of the mill and overlay to 2".

2.6 CHANGES TO DRAWINGS

- A. Sheet PP-1 to PP-7 and C-1. Changed Construction Keynote 28 from "1" Mill and Overlay" to "2" Mill and Overlay"

2.7 CLARIFICATIONS AND RESPONSE TO QUESTIONS

- A. None.

END OF ADDENDUM

DOCUMENT 00 41 10

BID SCHEDULE

PART 1 GENERAL

1.1 DOCUMENT INCLUDES

- A. Bid schedules.
- B. Measurement and payment provisions.

1.2 CONSTRUCTION CONTRACT

- A. The Construction Contract is known as:
SA009 - CIP - 12TH ST/CENTURY DR - PHASE 1

1.3 REFERENCES

- A. APWA 01 29 00: Payment Procedures.
- B. Document 00 50 00: Agreement.

1.4 SCHEDULE TO BE ADDED TO THE AGREEMENT

- A. This document will be added to the Bid and Agreement by reference.

PART 2 BID SCHEDULES

2.1 BASE BID

- A. Bid Schedule No. 1 below describes work basic to the Contract.

The rest of this page left blank intentionally

BID SCHEDULE No. 1

Century Dr from 430 W to about 1036 S. Review the plans for further details of Phase 1 scope., SA009 - CIP - 12TH ST/CENTURY DR - PHASE 1

Item No.	BID ITEM	UNIT	QUANTITY	UNIT PRICE	TOTAL PRICE
1	Quality Control Testing	LS	1		
2	Mobilization	LS	1		
3	Subsurface Investigation	Hour	16		
4	Pre-construction Video	LS	1		
5	Post Construction Sewer Main CCTV Inspection	LF	2,921		
6	Traffic Control	LS	1		
7	SWPPP	LS	1		
8	Landscaping	LS	1		
9	Removal of Asphalt Pavement	SY	4,500		
10	6" Asphalt (SP-1/2, PG 64-34)	TON	1,400		
11	Untreated Base Course (1" minus)	TON	2,000		
12	Remove & Replace Ex Curb & Gutter	LF	440		
13	Raise and Collar Water Valves	EACH	13		
14	Raise and Collar Survey Monument	EACH	2		
15	Remove and Replace Survey Monument	EACH	4		
16	21" PVC (SDR-35) Sewer Pipe	LF	2,921		
17	10" PVC (SDR-35) Sewer Pipe	LF	40		
18	Connect to EX CWSID SSMH	EACH	1		
19	60"-ID Precast SSMH	EACH	9		
20	60"-ID Precast Drop Manhole (SSMH-06, 10 and 11)	EACH	3		
21	Import Pipe Zone Backfill (Sewer)	TON	3,500		
22	Import Trench Zone Backfill	TON	12,100		
23	4" PVC Sewer Service Lateral Replacement	LF	390		
24	6" PVC Sewer Service Lateral Replacement	LF	480		
25	4" Service Lateral Cleanout and Service Reconnection	EACH	13		
26	6" Service Lateral Cleanout and Service Reconnection	EACH	16		

27	Manhole Abandonment	EACH	5		
28	Cut, Cap, and Abandon Existing Pipe	EACH	2		
29	Existing Water Meter Vault Relocation	LS	1		
30	8" PVC C-900 (DR-18) Water Pipe	LF	20		
31	8" Gate Valve	EACH	3		
32	6" PVC C-900 (DR-18) Water Pipe	LF	65		
33	6" Gate Valve	EACH	3		
34	2" Mill and Overlay	SY	12,388		
35	Import Flowable Fill	CY	100		
36	Import Pipe Zone Backfill (Water)	TON	52		
37	Raise and Collar Existing Manholes	EACH	5		
38	Existing Manhole Removal	EACH	1		
39	Existing Water Valve Removal	EACH	2		
40	Remove and Replace Existing Sidewalk (4" THK)	SY	5		
41	Remove and Replace Existing Concrete (6" THK)	SY	16		
42	Sewer Lateral CCTV Inspection	LF	2,320		

Total = \$ _____

Schedule Total in Words _____

Signature _____

PART 3 MEASUREMENTS AND PAYMENT

3.1 GENERAL

- A. See measurement and payment procedures in APWA Section 01 29 00.
- B. ENGINEER will take all measurements and compute all quantities.
- C. CONTRACTOR will verify measurement and quantities.
- D. CONTRACTOR will provide all equipment, workers, and survey crews to assist ENGINEER in making measurements.
- E. Units of measurement are listed above in the bid schedule(s).

3.2 QUALITY CONTROL TESTING, Bid Item No. 1

- a. Measurement will be made by lump sum (LS).
- b. Payment: Covers cost of all Quality Control Testing as outlined in APWA 01 45 00. Payment will be for the length of permanently installed pipe and not sacrificial pipe or temporary pipe. If additional control testing is requested by ENGINEER and testing shows product meets specification, such testing will be paid for by Change Order. (Refer to Section 01 45 00, Quality Control).
- c. Backfill Quality Control Requirements:
 - i. The number of compliance tests required is one density test per lift in each 200 feet of trench in a random location. And one density test per lift within each 25 square feet of area under pavement.
 - ii. An uncompacted backfill lift is 8 inches thick
 - iii. Deficient number of required tests measured in percent will result in a pay reduction up to 25 percent of the classification of work (Bid Item) required compacted backfill material.
 - iv. Test results by an independent testing agency will be the only test results accepted.
- d. Asphalt Quality Control Requirements:
 - i. Contractor to contract with third party independent testing agency to preform non-destructive density testing by gage: one per day or per 1,000 square yards.
 - ii. (Refer to Section 32 12 16.13, Plant-Mix Bituminous Paving).
- e. Concrete Quality Control Requirements:
 - i. Contractor to contract with third party independent testing agency to collect samples and perform testing in compliance with APWA specifications.
 - ii. (Refer to Section 03 30 05, Concrete Testing).
- f. Payments will be made on percentage basis as follows and in accordance with retainage as described in the Contract Documents.

Percent of Original Contract
Amount Earned

25

50

75

Percent of Amount Bid for
Quality Control to be Paid

25

50

75

100

100

- g. Payment covers the air testing of permanently installed sewer mains per Ogden City Engineering Standards and APWA Specifications (Section 33 08 00 Commissioning of Water Utilities).

3.3 MOBILIZATION, Bid Item No. 2

- a. Measurement will be made by lump sum (LS).
- b. Payment: Covers cost of mobilization, demobilization, installation of temporary facilities and bringing all necessary construction equipment to the site. Payment will be made on a percentage basis as follows. (Refer to APWA Section 01 71 13, Mobilization and Demobilization).

Percent of Original Contract Amount Earned	Percent of Amount Bid for Mobilization to be Paid
5	40
15	20
40	30
50	10

- c. Payment covers the cost of furnishing and installing project signage in accordance with Section 01 58 00.

3.4 SUBSURFACE INVESTIGATION, Bid Item No. 3

- a. Measurement will be made by counting the actual number of hours of work completed by the machine and operator to investigate miscellaneous underground features as required by the ENGINEER (HRS). Areas to be excavated MUST BE AGREED UPON with Resident Project Inspector in order to be paid. No allowance of time will be made for transporting the backhoe or other equipment to and from the job site when the backhoe or other equipment is located on the site of this Contract.
- b. Payment includes backfill and surface restoration to match the pre-existing condition in accordance with Section 33 05 20, Backfilling Trenches.
- c. Payment covers furnishing and providing labor and equipment for investigation at critical locations to verify field conditions, due to encountering unmarked utilities, buried structures, existing miscellaneous pipelines, wire and cables, and sub surface features as required by the ENGINEER and as shown on the construction plans.
- d. Contractor shall provide record of hours spent per excavation location, excavation dimensions and purpose, along with monthly pay application. (Refer to Section 02 41 20 SP, Utility Investigation).

3.5 PRE CONSTRUCTION VIDEO, Bid Item No. 4

- a. Measurement will be made by lump sum (LS).
- b. Payment covers the cost of labor, materials and equipment used to preform color audio-video recording of the existing pre-construction project site conditions along the proposed 21" sanitary sewer.

3.6 POST CONSTRUCTION SEWER MAIN CCTV INSPECTION, Bid Item No. 5

- a. Measurement will be made by linear feet (LF).
- b. Payment covers all costs associated with televising the newly installed sewer system and documenting the location of laterals tied into the new sewer main.
- c. Payment covers all costs associated with televising the constructed sewer system in lieu of exfiltration testing.
- d. Records of video footage and notes shall be provided to Owner. (Refer to Section 33 31 01 SP, Existing Sewer Bypass Pumping; and Section 33 38 00 SP, Sewer CCTV Inspection).
- e. Post-construction televising in accordance with Ogden City Standard Chapter 3, Section 2.1 and as specified below. (Refer to Section 33 38 00 SP, Existing Sewer CCTV Inspection).
 - i. CCTV personnel are to be certified under National Association of Sewer Service Companies (NASSCO) Pipeline Assessment Certification Program (PACP).
 - ii. Ogden City Reserves the right to have any portion of the pipe televised again at the contractor's expense, based on inaccurate or unclear information.

3.7 TRAFFIC CONTROL, Bid Item No. 6

- a. Measurement will be made by lump sum (LS).
- b. Payment covers traffic control plan, traffic control technicians, flaggers, pavement markings, signs, barricades, and all traffic control devices (Refer to Section 01 55 26, traffic control). Emergency services notification submission shall be stamped by a Professional Engineer.

3.8 SWPPP, Bid Item No. 7

- a. Measurement will be made by lump sum (LS).
- b. Payment covers the CONTRACTOR in obtaining coverage and following all requirements of the State of Utah DWQ General Permit for Storm Water Discharges from Construction Activities or the "Construction General Permit" (CGP). Permit No. UTRC00000 found at: <https://documents.deq.utah.gov/water-quality/stormwater/construction/DWQ-2020-013890.pdf>. The CONTRACTOR will be listed as an Operator and Ogden City will be listed as the Owner. Payment covers the CONTRACTOR to meet all requirements of the CGP. Requirements of this permit include, but are not limited to:
 - i. Preparation and maintenance of a storm water pollution prevention plan (SWPPP). The SWPPP must be submitted to and approved by City prior to beginning construction.
 - ii. Submitting a Notice of Intent (NOI) prior to construction.
 - iii. Maintaining active permit coverage throughout all phases of construction. It is the responsibility of the CONTRACTOR to ensure that permit coverage does not expire. Once the site meets the conditions for terminating CGP coverage, the CONTRACTOR must pass a final inspection with the City

SWPPP inspector prior to submitting the Notice Of Termination (NOT) to DWQ.

- iv. Installing and maintaining all storm water Best Management Practices (BMPs) in accordance with the approved SWPPP that are not listed as separate bid items, which may include; silt fence, construction fencing, inlet protection, inlet clean-out (if necessary).
- v. Performing necessary Contractor SWPPP inspections in accordance with the SWPPP.
- vi. Maintaining all required documentation (inspection reports, corrective action reports, SWPPPs, etc.). Ogden City may request documents associated with the project for up to three years from the date the site is finalized.
- c. The CGP outlines the required steps for preparing and maintaining the SWPPP, provides guidelines, examples, templates, BMP specifications, etc.
- d. Payment shall cover dust control/watering of the site, daily maintenance of the construction zone, daily sweeping at a minimum, maintaining BMP devices, and maintaining general cleanliness of the site and staging areas during the construction process to the satisfaction of the City. Trenches shall be maintained at all times to avoid ruts larger than a 2-inch depth.
- e. Payment shall cover temporary water meter rental fees billed to the Contractor from the City. Contractor will NOT be billed for water usage for the project but must utilize a meter to obtain City water for the project.

3.9 LANDSCAPING, Bid Item No. 8

- a. Measurement will be made by lump sum (LS).
- b. Payment covers the cost of labor, materials, tools, and equipment necessary to restore disturbed landscaping, irrigation lines, sod and other landscape features to existing conditions. (Refer to Section 32 94 00 SP, Landscaping).

3.10 REMOVAL OF ASPHALT PAVEMENT, Bid Item No. 9

- a. Measurement will be made by square yard (SY).
- b. Payment covers necessary work to saw cut, remove and dispose of all pavement along the sanitary sewer line trench and all work associated with sewer laterals. (Refer to Section 02 41 14, Pavement Removal).

3.11 6" ASPHALT (SP-1/2, PG 64-34), Bid Item No. 10

- a. Measurement will be made by tons (TON).
- b. Payment covers the cost of furnishing all necessary materials, asphalt, tack coat equipment, labor, hauling, placement, and compaction to produce and acceptably deep excavation patch per Ogden City Standard RD-3, along Century Dr. The typical width of the roadway is about 36 feet. Payment covers the cost of installing 6"-thick of hot-mixed, hot laid asphalt concrete pavement (SP-1/2, PG 64-34 with the maximum recycled asphalt content not to exceed 15% for road Class III). The existing thickness of the asphalt is unknown. For bidding purposes, it is assumed that 6" of asphalt will be installed. During construction, Contractor shall match existing asphalt thickness +1" with a minimum thickness of 4" and a maximum

thickness of 7". (Refer to Section 33 05 25, Pavement Restoration).

- c. No more than 15% RAP allowed in asphalt mix.
- d. Payment also covers the cost of labor, materials, tools, and equipment required to return street striping, markings, and symbols to existing conditions on patched asphalt per Ogden City Standards and per MUTCD State Guidelines. (Refer to APWA Section 32 17 23, Pavement Markings).

3.12 UNTREATED BASE COURSE (1" MINUS), Bid Item No. 11

- a. Measurement will be made by tons (TON).
- b. Payment covers the cost of furnishing all necessary materials, aggregate base course, labor, hauling, placement, and compaction to produce an acceptably deep excavation patch per Ogden City Standard RD-3 along the sewer and all sewer lateral trenches. Payment covers the cost of installing the full thickness of road base (Grade – 1"). (Refer to Section 32 11 23, Aggregate Base Course).
- c. Payment does not cover UTBC for under curb & gutters. That will be covered under Bid Item 13.
- d. Acceptably deep is defined as the thickness of the base course required per the construction drawing,
- e. No payment will be made for aggregate base course purchased and installed as a temporary measure or in excess of the specified thickness(es).
- f. Recycled concrete material is not acceptable to be used in the aggregate base course.

3.13 REMOVE AND REPLACE EX CURB AND GUTTER, Bid Item No. 12

- a. Measurement will be made by linear foot (LF).
- b. Payment covers the cost of furnishing all necessary materials including untreated base course and equipment, labor, hauling, disposal, placement, compaction, and testing to remove and replace curb and gutter in accordance with Ogden City Standard Drawing RD-4 or to match existing adjacent curb & gutter configuration. (Refer to Section 32 16 13, Driveway, Sidewalk, Curb, Gutter).
- c. The quantity listed is an assumed quantity to establish a unit price for removal and replace curb and gutter in the event it is needed. The location shown on the construction plans is an approximate location and the exact location and the length will be determined in the field.

3.14 RAISE & COLLAR WATER VALVES, Bid Item No. 13

- a. Measurement will be made by per each installed valve (EA)/adjusted to finish grade with collar installed. Valves are expected to be lowered for paving, then raised to grade with collar after paving.
- b. Payment covers all tools, labor, materials, and equipment to lower and raise existing structures to be flush (slightly lower by ¼") with new grade. Payment covers all costs associated with raising/lowering the existing structure; removal and disposal of existing materials, concrete collars, concrete seal, labor, and all other appurtenant work not otherwise stipulated to be paid for separately.
- c. Valve cans shall be clear of any concrete debris or silting inside and must be centered, and cleaned around the nut of the valve to be accepted.

- d. Concrete for surface collars shall be obtained from batched concrete (i.e. Jack B. Parsons, Geneva, etc.) with fiber reinforcement in the batch. All concrete is to be sealed with a curing compound after concrete sets.
- e. All valve collars shall be stamped for valve identification with size and arrow. Hydrant valves shall be stamped with an "H".
- f. Refer to Section 33 12 16, Water Meter

3.15 RAISE AND COLLAR SURVEY MONUMENT, Bid Item No. 14

- a. Measurement will be made by per installed valve (EA)/adjusted to finish grade with collar installed. Monuments are expected to be lowered for paving, then raised to grade with collar after paving.
- b. Payment covers all tools, labor, materials, and equipment to lower and raise existing structures to be flush (slightly lower by ¼") with new grade. Payment covers all costs associated with raising/lowering the existing structure; removal and disposal of existing materials, concrete collars, concrete seal, labor, and all other appurtenant work not otherwise stipulated to be paid for separately.
- c. Concrete for surface collars shall be obtained from batched concrete (i.e. Jack B. Parsons, Geneva, etc.). Concrete must be sealed and batched with fibers.
- d. Refer to Section 31 05 10, Boundary Markers and Survey Monuments

3.16 REMOVE AND REPLACE SURVEY MONUMENT, Bid Item No. 15

- a. Measurement will be made by per installed valve (EA)/adjusted to finish grade with collar installed. Monuments are expected to be removed for trenching, then replaced to grade with collar after paving.
- b. Payment covers all tools, labor, materials, and equipment to remove and replace existing structures to be flush (slightly lower by ¼") with new grade. Payment covers all costs associated with removing/replacing the existing structure; removal and disposal of existing materials, concrete collars, concrete seal, labor, and all other appurtenant work not otherwise stipulated to be paid for separately.
- c. Concrete for surface collars shall be obtained from batched concrete (i.e. Jack B. Parsons, Geneva, etc.). Concrete must be sealed and batched with fibers.
- d. Refer to Section 31 05 10, Boundary Markers and Survey Monuments

3.17 21" PVC SEWER PIPE, Bid Item No. 16

- a. Measurement will be made by linear foot (LF).
- b. Payment covers the cost of the size and type of pipe indicated (21" PVC SDR-35, color green) with installation per Ogden City Standard Drawing SS-3. Payment covers the cost of incidental work such as, fittings, couplings, joint lubricants, nuts, bolts and washers; removal and disposal of interfering structures and obstruction; grout; jackhammer work; trench shoring or trench boxes as applicable; underground plastic lines markers; cleaning of invert covers; installation of geotextile separation wrap per Ogden City Standard Drawing SS-4; removable and disposal of waste materials, excavation spoils; restoration of all utilities damaged as a result of construction operations; site dewatering; trunk line cleaning and commissioning; adjustments to grade for manhole inverts and similar work to

complete the installation of the sanitary sewer trunk line. (Refer to Section 33 31 00, Sanitary Sewerage System, and Section 33 05 07 Polyvinyl Chloride Pipe).

3.18 10" PVC SEWER PIPE, Bid Item No. 17

- a. Measurement will be made by linear foot (LF).
- b. Payment covers the cost of the size and type of pipe indicated (10" PVC SDR-35, color green) with installation per Ogden City Standard Drawing SS-3. Payment covers the cost of incidental work such as, fittings, couplings, joint lubricants, nuts, bolts and washers; removal and disposal of interfering structures and obstruction; grout; jackhammer work; trench shoring or trench boxes as applicable; underground plastic lines markers; cleaning of invert covers; installation of geotextile separation wrap per Ogden City Standard Drawing SS-4; removable and disposal of waste materials, excavation spoils; restoration of all utilities damaged as a result of construction operations; site dewatering; trunk line cleaning and commissioning; adjustments to grade for manhole inverts and similar work to complete the installation of the sanitary sewer trunk line. (Refer to Section 33 31 00, Sanitary Sewerage System and Section 33 05 07 Polyvinyl Chloride Pipe).

3.19 CONNECT TO EX CWSID SSMH, Bid Item, No. 18

- a. Measurement will be made by each (EA).
- b. Payment covers the cost of excavation, potholing, core drilling, grouting, backfill and compaction needed to connect the new sewer line into the existing Central Weber Sewer Improvement District manhole, and all material, including flexible manhole boot, manpower, and equipment required for a complete installation. (Refer to Section 33 31 00, Sanitary Sewer Systems).
- c. Payment also covers removing and disposing of the existing 18" sewer stub that will be replaced by the proposed 21" PVC sewer. (Refer to Section 33 31 00, Sanitary Sewer Systems).
- d. Payment also covers all costs associated with providing bypass pumping and overland piping from one manhole to another in order to facilitate the construction of new sewer and/or televising of the existing sewer.

3.20 INSTALL 60"-ID PRECAST SSMH, Bid Item No. 19

- a. Measurement will be made per each (EA).
- b. Payment covers the cost of excavation, bedding and backfill, potholing, and new manhole materials; installation of new manhole, sewer lid, ring & cover, collaring, relocation as needed for sewer connection(s) within manhole; providing material, labor, and incidentals for reconnecting all sewer mains and laterals to new manhole; and other miscellaneous devices, materials, or equipment required for a complete installation. (Refer to Section 33 31 00, Sanitary Sewerage System; Ogden City Standard Drawings SS-1 to SS-6).
- c. Payment also covers all costs associated with providing bypass pumping and overland piping from one manhole to another in order to facilitate the construction of new sewer and/or televising of the existing sewer.

3.21 INSTALL 60"-ID PRECAST DROP MANHOLE (SSMH-06, 10 AND 11), Bid Item No. 20

- a. Measurement will be made by each (EA).
- b. Payment covers the cost of excavation, bedding and backfill, potholing, and new drop manhole materials; installation of new drop manhole, sewer lid, ring & cover, collaring, relocation as needed for sewer connection(s) within manhole; providing material, labor, and incidentals for reconnecting all sewer mains and laterals to new manhole; and other miscellaneous devices, materials, or equipment required for a complete installation. (Refer to Section 33 31 00, Sanitary Sewerage System; Ogden City Standard Drawings SS-1 to SS-6).
- c. Payment also covers all costs associated with providing bypass pumping and overland piping from one manhole to another in order to facilitate the construction of new sewer and/or televising of the existing sewer.

3.22 IMPORT PIPE ZONE BACKFILL (SEWER), Bid Item No. 21

- a. Measurement will be made per ton of backfilled material (TON).
- b. Payment covers the cost of furnishing all necessary materials and equipment, labor, hauling, placement, and compaction to produce an acceptable trench bedding (Sewer Rock ASTM Size No. 4). No allowance will be made for bedding and fill materials required to fill voids caused by trenching operations, which exceed the dimensions shown on the drawings. (Refer to Section 31 05 13, Common Fill and 33 05 20, Backfilling Trenches).
- c. Pipe zone includes all of the pipe zone area per Ogden City Standard Drawing SS-4.
- d. Payment covers the pipe zone backfill for the sewer pipe only.

3.23 IMPORT TRENCH ZONE BACKFILL, Bid Item No. 22

- a. Measurement will be made per ton of backfilled material (TON).
- b. Payment covers the cost of furnishing all necessary materials and equipment, labor, hauling, placement, and compaction to produce an acceptable trench fill (APWA - 2" Minus Granular Fill Borrow). No allowance will be made for bedding and fill materials required to fill voids caused by trenching operations, which exceed the dimensions shown on the drawings. Payment also includes cost to remove and dispose of existing soils displaced by the trench bedding and fill. (Refer to Section 31 05 13, Common Fill and 33 05 20, Backfilling Trenches).
- c. Trench backfill is defined as the material required to fill the trench from the top of the pipe zone to the bottom of the aggregate base course. See Ogden City Standard Drawing SS-3.
- d. Payment covers the trench zone backfill for both the sewer pipe and the water pipe.

3.24 4" SEWER SERVICE LATERAL REPLACEMENT, Bid Item No. 23

- a. Measurement will be made per lineal foot (LF), from sewer trunk line to sewer service cleanout.
- b. Payment covers the cost of excavation and/or pipe bursting, soil preparation, potholing, the sewer lateral, connection of the new sewer lateral to clean out,

existing removal or abandonment and disposal of the existing sewer lateral(s); and other miscellaneous devices, materials, or equipment required for a complete sewer lateral installation per Ogden City Standard Drawings SS-2 and SS-8. Import pipe bedding and backfill are to be paid for separately. (Refer to Section 33 31 00, Sanitary Sewerage Systems).

3.25 6" SEWER SERVICE LATERAL REPLACEMENT, Bid Item No. 24

- a. Measurement will be made per lineal foot (LF), from sewer trunk line to sewer service cleanout.
- b. Payment covers the cost of excavation and/or pipe bursting, soil preparation, potholing, the sewer lateral, connection of the new sewer lateral to clean out, existing removal or abandonment and disposal of the existing sewer lateral(s); and other miscellaneous devices, materials, or equipment required for a complete sewer lateral installation per Ogden City Standard Drawings SS-2 and SS-8. Import pipe bedding and backfill are to be paid for separately. (Refer to Section 33 31 00, Sanitary Sewerage Systems).

3.26 4" SERVICE LATERAL CLEANOUT AND SERVICE RECONNECTION, Bid Item No. 25

- a. Measurement will be made per each (EA).
- b. Payment shall cover the costs for all materials, excavation, backfill, compaction, cleaning, labor, tools, and incidentals necessary to furnish and install pipe, fittings, frame and cover, and incidentals per the construction plans and details and per Ogden City Standard Drawings SS-2 and SS-8. Sewer cleanouts shall be installed off the back of curb. Utility locating to locate the existing lateral shall be included as part of this pay item. Shoring will be required to mitigate the excavation impact to a maximum of 50 square feet disturbed. (Refer to Section 33 31 00, Sanitary Sewerage Systems).
- c. Payment covers the cost of excavating, soil preparation, connection of the sewer lateral to new sewer main via wye, tee, Fernco shear coupling, rubber gaskets, fittings, commissioning lateral; and other miscellaneous devices, materials, or equipment required for a complete service connection per Ogden City Standard Drawings SS-2 and SS-8. Includes installation of 10-foot or less of new PVC (SDR 35) sewer lateral along with trenching, bedding, etc. – any additional length required will be paid by the Lateral Replacement line item and other applicable line items. Payment includes the installation of a robust soil-tight plugs within the lateral to be abandoned. (Refer to Section 33 31 00, Sanitary Sewerage Systems; Ogden City Standard Drawings SS-2).

3.27 6" SERVICE LATERAL CLEANOUT AND SERVICE RECONNECTION, Bid Item No. 26

- a. Measurement will be made per each (EA).
- b. Payment shall cover the costs for all materials, excavation, backfill, compaction, cleaning, labor, tools, and incidentals necessary to furnish and install pipe, fittings, frame and cover, and incidentals per the construction plans and details and per Ogden City Standard Drawings SS-2 and SS-8. Sewer cleanouts shall be installed

off the back of curb. Utility locating to locate the existing lateral shall be included as part of this pay item. Shoring will be required to mitigate the excavation impact to a maximum of 50 square feet disturbed. (Refer to Section 33 31 00, Sanitary Sewerage Systems).

- c. Payment covers the cost of excavating, soil preparation, connection of the sewer lateral to new sewer main via wye, tee, Fernco shear coupling, rubber gaskets, fittings, commissioning lateral; and other miscellaneous devices, materials, or equipment required for a complete service connection per Ogden City Standard Drawings SS-2 and SS-8. Includes installation of 10-foot or less of new PVC (SDR 35) sewer lateral along with trenching, bedding, etc. – any additional length required will be paid by the Lateral Replacement line item and other applicable line items. Payment includes the installation of a robust soil-tight plugs within the lateral to be abandoned. (Refer to Section 33 31 00, Sanitary Sewerage Systems; Ogden City Standard Drawings SS-2).

3.28 MANHOLE ABANDONMENT, Bid Item No. 27

- a. Measurement will be made by each (EA).
- b. Payment covers all cost of labor, equipment, and materials, to remove a manhole structure to 24 inches below grade, fracture the structure floor, install robust soil tight plugs within all pipes, and backfill with open graded gravel (i.e. 3/4" clean). Location and description of manhole structure shall be precisely recorded and included in as-built drawings. (Refer to Section 02 41 13 Selective Site Demolition).

3.29 CAP, CUT AND ABANDON EXISTING PIPE, Bid Item No. 28

- a. Measurement will be made by each (EA).
- b. Payment covers all costs of labor, equipment, materials, to cut, cap, and abandon existing sewer lines that are to be abandoned, as indicated on the plans. Payment also included the cost of a robust soil tight plug. (Refer to Section 02 41 13 Selective Site Demolition).

3.30 EXISITING WATER METER VAULT RELOCATION, Bid Item No. 29

- a. Measurement will be made by lump sum (LS).
- b. Payment covers the cost of labor, equipment, materials for the new vault, including valves, appurtenances, bends, and all other miscellaneous parts needed inside the vault to relocate the existing water meter vault and install a new one as indicated in the plans. (Refer to Section 33 11 11, Relocate Water Meters and Fire Hydrants)
- c. Payment also covers the cost of demolishing the old water meter vault as indicated on the plans. (Refer to Section 02 41 13 Selective Site Demolition).
- d. Payment also covers the cost of connecting the new water line to the existing water system.
- e. The vault structure design will need to be stamped by a structural engineer.
- f. Payment covers the cost of labor, equipment, materials for the manhole covers, manhole rings or cone sections and adjusting the manhole covers so that they are flush with the new pavement.

3.31 8" PVC C-900 (DR-18) Water Pipe, Bid Item No. 30

- a. Measurement will be made by linear foot (LF) with no reduction in length because of valves and fittings.
- b. Payment covers the cost of the size and type of pipe indicated, with installation per Ogden City Standard Drawing W-18 and surface restoration identified as separate pay items in the price schedule
- c. Payment covers the cost of excavation, incidental work such as joint restraint systems, fittings, couplings, joint lubricants, nuts, bolts and washers; removal and disposal of interfering structures and obstructions; jackhammer work; trench shoring or trench boxes as applicable, underground plastic line markers, tracer wire; removal and disposal of waste materials; restoration of all utilities damaged as a result of operations; site dewatering; pipe line cleaning; water main repair or replacement if damaged by CONTRACTOR; adjustments to grade of existing valve boxes or traffic lids or manholes; and similar work to complete the installation of the water line. (Refer to Section 33 05 07, Polyvinyl Chloride Pipe)
- d. Payment also covers the cost of demolishing the old water lines as indicated on the plans. (Refer to Section 02 41 13 Selective Site Demolition).
- e. Payment also covers the cost of connecting the new water line to the existing water system.

3.32 8" Gate Valve (Class 250), Bid Item No. 31

- a. Measurement will be made by actual count per each installed (EA).
- b. Payment covers the cost of excavation, foundation preparation, restraint devices, valve boxes, valve, concrete collar with seal, backfill and other miscellaneous devices, materials, or equipment required for a complete installation. See Ogden City Standard Drawing W-11 and W-12. Ogden City's Water Department Approved Materials List should be consulted for acceptable valve types. (Refer to Section 33 12 16, Water Valves)

3.33 6" PVC C-900 (DR-18) Water Pipe, Bid Item No. 32

- a. Measurement will be made by linear foot (LF) with no reduction in length because of valves and fittings.
- b. Payment covers the cost of the size and type of pipe indicated, with installation per Ogden City Standard Drawing W-18 and surface restoration identified as separate pay items in the price schedule
- c. Payment covers the cost of excavation, incidental work such as joint restraint systems, fittings, couplings, joint lubricants, nuts, bolts and washers; removal and disposal of interfering structures and obstructions; jackhammer work; trench shoring or trench boxes as applicable, underground plastic line markers, tracer wire; removal and disposal of waste materials; restoration of all utilities damaged as a result of operations; site dewatering; pipe line cleaning; water main repair or replacement if damaged by CONTRACTOR; adjustments to grade of existing valve boxes or traffic lids or manholes; and similar work to complete the installation of the water line. (Refer to Section 33 05 07, Polyvinyl Chloride Pipe)
- d. Payment also covers the cost of demolishing the old water lines as indicated on the

plans. (Refer to Section 02 41 13 Selective Site Demolition).

- e. Payment also covers the cost of connecting the new water line to the existing water system.

3.34 6" Gate Valve (Class 250), Bid Item No. 33

- a. Measurement will be made by actual count per each installed (EA).
- b. Payment covers the cost of excavation, foundation preparation, restraint devices, valve boxes, valve, concrete collar with seal, backfill and other miscellaneous devices, materials, or equipment required for a complete installation. See Ogden City Standard Drawing W-11 and W-12. Ogden City's Water Department Approved Materials List should be consulted for acceptable valve types. (Refer to Section 33 12 16, Water Valves)

3.35 2" MILL AND OVERLAY, Bid Item No. 34

- a. Measurement will be made by square yard (SY).
- b. Payment covers the cost of milling, loading, hauling, and disposal of milled material, and furnishing placing and compacting new 2" asphalt mix (SP-1/2, PG 64-34 with the maximum recycled asphalt content not to exceed 15% for road Class III) for overlay on Century Drive. (Refer to Section 33 05 25, Pavement Restoration)

3.36 IMPORT FLOWABLE FILL, Bid Item No. 35

- a. Measurement will be made per CY of backfilled material (CY).
- b. Payment covers the cost of furnishing all necessary materials and equipment, labor, hauling, placement, and compaction to produce an acceptable trench fill (Flowable Fill meeting APWA specifications). No allowance will be made for bedding and fill materials required to fill voids caused by trenching operations, which exceed the dimensions shown on the drawings. Payment also includes cost to remove and dispose of existing soils displaced by the trench bedding and fill. (Refer to Section 31 05 13, Common Fill, 31 05 15 Cement Treated Fill and 33 05 20, Backfilling Trenches).
- c. Trench backfill is defined as the material required to fill the trench from the top of the pipe zone to the bottom of the aggregate base course. See Ogden City Standard Drawing SS-3.

3.37 IMPORT PIPE ZONE BACKFILL (WATER), Bid Item No. 36

- a. Measurement will be made per ton of backfilled material (TON).
- b. Payment covers the cost of furnishing all necessary materials and equipment, labor, hauling, placement, and compaction to produce an acceptable trench bedding (3/8" minus). No allowance will be made for bedding and fill materials required to fill voids caused by trenching operations, which exceed the dimensions shown on the drawings. (Refer to Section 31 05 13, Common Fill and 33 05 20, Backfilling Trenches).
- c. Pipe zone includes all of the pipe zone area per Ogden City Standard Drawing W-18.
- d. Payment covers the pipe zone backfill for the water pipe only.

3.38 RAISE & COLLAR EXISTING MANHOLES, Bid Item No. 37

- a. Measurement will be made by per each installed storm drain manhole (EA)/adjusted to finish grade with collar installed. Storm drain manholes are expected to be lowered for paving, then raised to grade with collar after paving.
- b. Payment covers all tools, labor, materials, and equipment to lower and raise existing structures to be flush (slightly lower by ¼") with new grade. Payment covers all costs associated with raising/lowering the existing structure; removal and disposal of existing materials, concrete collars, concrete seal, labor, and all other appurtenant work not otherwise stipulated to be paid for separately.
- c. Manhole frames and rings shall be clear of any concrete debris or silting inside and must be centered, and cleaned to be accepted.
- d. Concrete for surface collars shall be obtained from batched concrete (i.e. Jack B. Parsons, Geneva, etc.) with fiber reinforcement in the batch. All concrete is to be sealed with a curing compound after concrete sets.

3.39 EXISTING MANHOLE REMOVAL, Bid Item No. 38

- a. Measurement will be made by per each existing manhole (EA) removed.
- b. Existing Manhole Removal will be paid for at the contract unit price per each, which price shall be full compensation for furnishing all labor, materials, tools, equipment, and incidentals necessary to complete the work.
- c. Payment shall include the complete removal of the existing manhole structure including but not limited to manhole frame and cover, manhole barrel, cone and base, all appurtenances and connections.
- d. Payment shall also include but not limited to excavation necessary for manhole removal; protection and support of existing utilities; disposal of removed materials; backfilling with approved material and compaction to specified requirements. (Refer to Section 02 41 13, Selective Site Demolition)

3.40 EXISTING WATER VALVE REMOVAL, Bid Item No. 39

- a. Measurement will be made by actual count per each removed (EACH).
- b. Payment covers the cost of furnishing all necessary materials and equipment, labor, demolition, backfill, compaction, disposal, and testing to remove existing water valve boxes as called out in the plans. (Refer to Section 02 41 13, Selective Site Demolition)

3.41 REMOVE AND REPLACE EXISTING SIDEWALK (4" THK), Bid Item No. 40

- a. Measurement will be made by square yard (SY).
- b. Payment covers the cost of furnishing all necessary materials and equipment, labor, hauling, disposal, placement, compaction, and testing to replace sidewalk in accordance with Ogden City Standard Drawing RD-5 or to match existing adjacent sidewalk configuration. (Refer to Section 32 16 13, Driveway, Sidewalk, Curb, Gutter)

3.42 REMOVE AND REPLACE EXISTING CONCRETE (6" THK), Bid Item No. 41

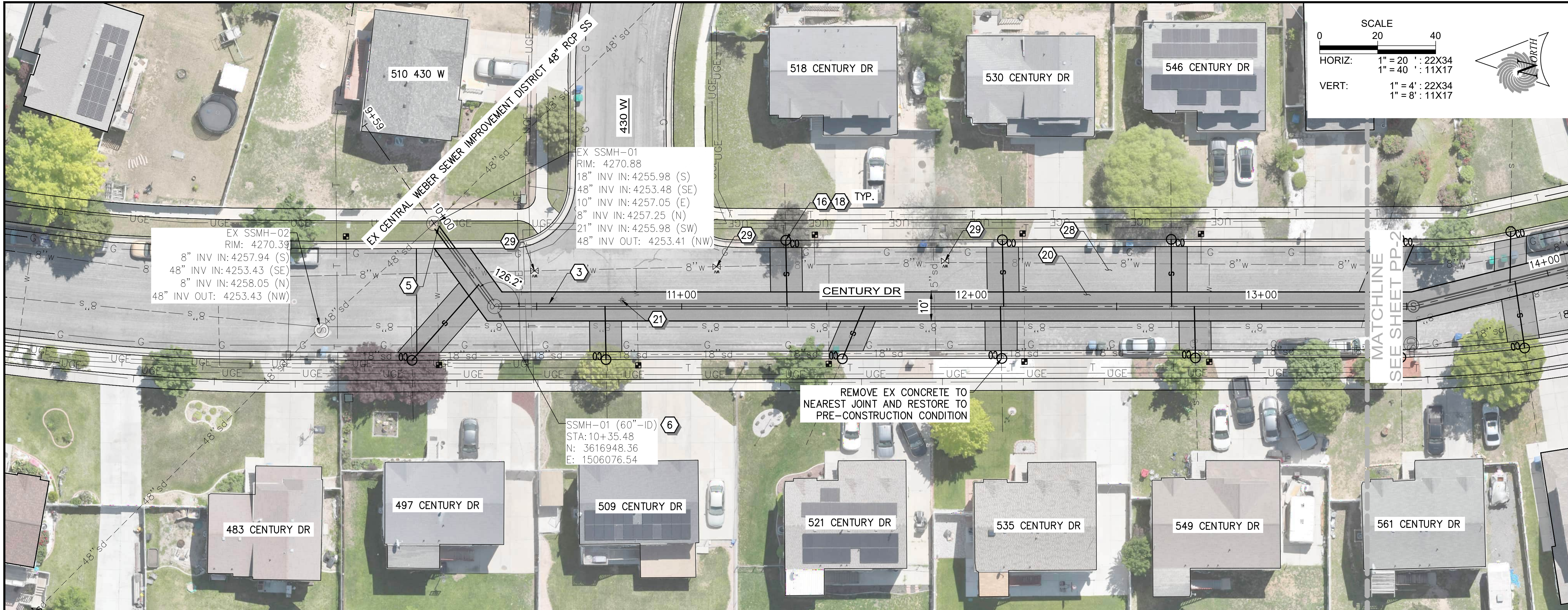
- a. Measurement will be made by square yard (SY).

- b. Payment covers the cost of furnishing all necessary materials and equipment, labor, hauling, disposal, placement, compaction, and testing to replace concrete to match existing adjacent concrete configuration. This applies to concrete replacement for sewer lateral and cleanout work as called out on the plans.

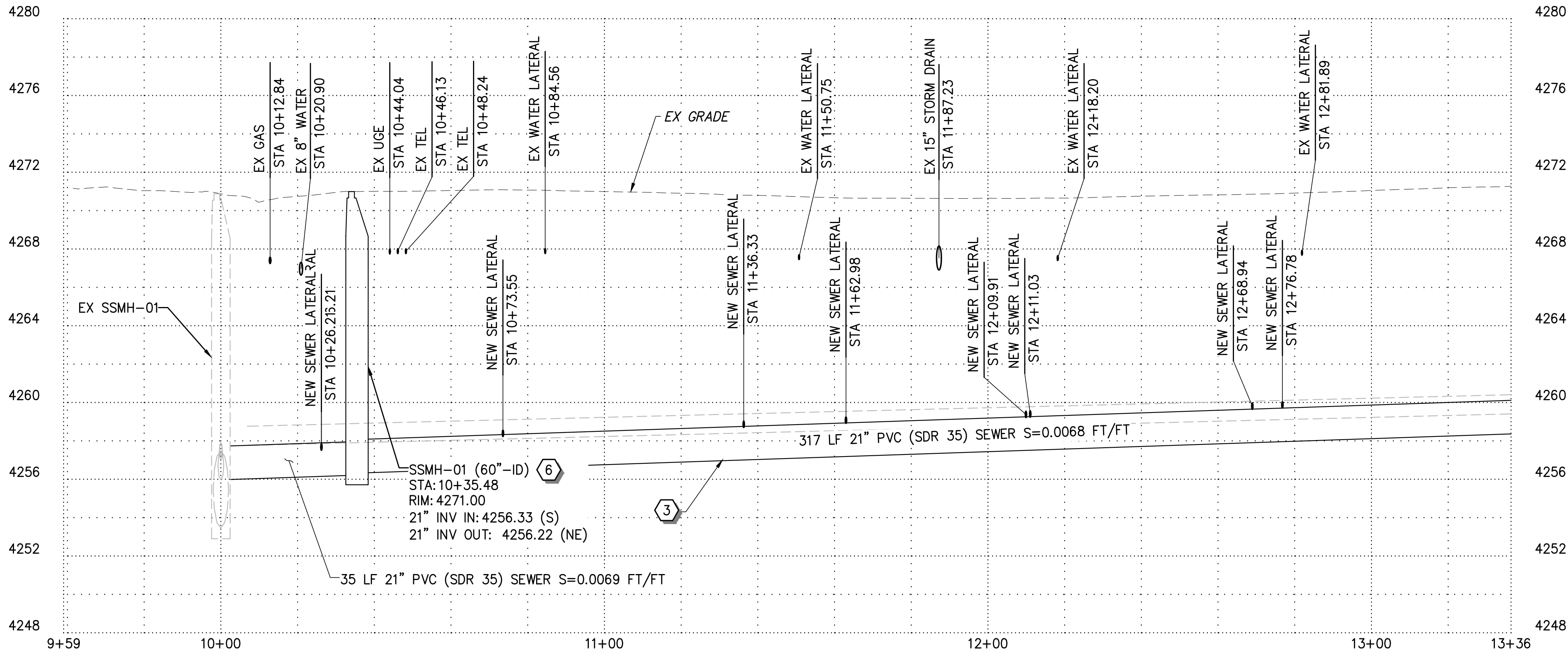
3.43 SEWER LATERAL CCTV INSPECTION, Bid Item No. 42

- a. Measurement will be made by linear feet (LF).
- b. Payment covers all costs associated with televising the existing sewer lateral (pre-construction) and newly installed sewer lateral (post-construction) up to 10 ft beyond the newly installed cleanout, and documenting the location of the existing lateral tied into the new sewer cleanout.
- c. Records of video footage and notes shall be provided to Owner. (Refer to Section 33 31 01 SP, Existing Sewer Bypass Pumping; and Section 33 38 00 SP, Sewer CCTV Inspection).
- d. Pre-construction and post-construction televising in accordance with Ogden City Standard Chapter 3, Section 2.1 and as specified below. (Refer to Section 33 38 00 SP, Existing Sewer CCTV Inspection).
 - i. CCTV personnel are to be certified under National Association of Sewer Service Companies (NASSCO) Pipeline Assessment Certification Program (PACP).
 - ii. Ogden City Reserves the right to have any portion of the pipe televised again at the contractor's expense, based on inaccurate or unclear information.

END OF DOCUMENT



PLAN



PROFILE

CONSTRUCTION NOTES

1

8" PVC (SDR 35) SEWER PIPE

2

10" PVC (SDR 35) SEWER PIPE

3

21" PVC (SDR 35) SEWER PIPE

4

36" PVC (SDR 35) SEWER PIPE

5

CONNECT TO EXISTING MANHOLE

6

60" SEWER MANHOLE PRECAST

7

60" SEWER DROP MANHOLE PRECAST

8

72" SEWER MANHOLE PRECAST

9

84" SEWER MANHOLE PRECAST

10

60" SEWER MANHOLE POUR IN PLACE BASE

11

72" SEWER MANHOLE POUR IN PLACE BASE

12

REMOVE & DISPOSE EXISTING SEWER PIPE

13

REMOVE AND DISPOSE OF EXISTING MANHOLE

14

ABANDON EX SANITARY SEWER

15

ABANDON EX MANHOLE

16

4" PVC SEWER LATERAL

17

6" PVC SEWER LATERAL

18

4" CLEANOUT

19

6" CLEANOUT

20

REMOVE AND REPLACE WITH 6" ASPHALT

21

R&R SURVEY MONUMENT

22

RAISE AND COLLAR SURVEY MONUMENT

23

R&R CURB & GUTTER

24

R&R SIDE WALK

25

R&R FENCE

26

R&R UDOT PANELS

27

R&R UDOT CURB AND GUTTER

28

2" MILL AND OVERLAY

29

RAISE AND COLLAR EX WATER VALVE

30

RAISE AND COLLAR EX MANHOLE

31

REMOVE EX WATER VALVE

SS-1

SS-2

SS-3

SS-4

SS-5

SS-6

SS-7

SS-8

SS-9

SS-10

SS-11

SS-12

SS-13

SS-14

SS-15

SS-16

SS-17

SS-18

SS-19

SS-20

SS-21

SS-22

SS-23

SS-24

SS-25

SS-26

SS-27

SS-28

SS-29

SS-30

SS-31

SS-32

SS-33

SS-34

SS-35

SS-36

SS-37

SS-38

SS-39

SS-40

SS-41

SS-42

SS-43

SS-44

SS-45

SS-46

SS-47

SS-48

SS-49

SS-50

SS-51

SS-52

SS-53

SS-54

SS-55

SS-56

SS-57

SS-58

SS-59

SS-60

SS-61

SS-62

SS-63

SS-64

SS-65

SS-66

SS-67

SS-68

SS-69

SS-70

SS-71

SS-72

SS-73

SS-74

SS-75

SS-76

SS-77

SS-78

SS-79

SS-80

SS-81

SS-82

SS-83

SS-84

SS-85

SS-86

SS-87

SS-88

SS-89

SS-90

SS-91

SS-92

SS-93

SS-94

SS-95

SS-96

SS-97

SS-98

SS-99

SS-100

SS-101

SS-102

SS-103

SS-104

SS-105

SS-106

SS-107

SS-108

SS-109

SS-110

SS-111

SS-112

SS-113

SS-114

SS-115

SS-116

SS-117

SS-118

SS-119

SS-120

SS-121

SS-122

SS-123

SS-124

SS-125

SS-126

SS-127

SS-128

SS-129

SS-130

SS-131

SS-132

SS-133

SS-134

SS-135

SS-136

SS-137

SS-138

SS-139

SS-140

SS-141

SS-142

SS-143

SS-144

SS-145

SS-146

SS-147

SS-148

SS-149

SS-150

SS-151

SS-152

SS-153

SS-154

SS-155

SS-156

SS-157

SS-158

SS-159

SS-160

SS-161

SS-162

SS-163

SS-164

SS-165

SS-166

SS-167

SS-168

SS-169

SS-170

SS-171

SS-172

SS-173

SS-174

SS-175

SS-176

SS-177

SS-178

SS-179

SS-180

SS-181

SS-182

SS-183

SS-184

SS-185

SS-186

SS-187

SS-188

SS-189

SS-190

SS-191

SS-192

SS-193

SS-194

SS-195

SS-196

SS-197

SS-198

SS-199

SS-200

SS-201

SS-202

SS-203

SS-204

SS-205

SS-206

SS-207

SS-208

SS-209

SS-210

SS-211

SS-212

SS-213

SS-214

SS-215

SS-216

SS-217

SS-218

SS-219

SS-220

SS-221

SS-222

SS-223

SS-224

SS-225

SS-226

SS-227

SS-228

SS-229

SS-230

SS-231

SS-232

SS-233

SS-234

SS-235

SS-236

SS-237

SS-238

SS-239

SS-240

SS-241

SS-242

SS-243

SS-244

SS-245

SS-246

SS-247

SS-248

SS-249

SS-250

SS-251

SS-252

SS-253

SS-254

SS-255

SS-256

SS-257

SS-258

SS-259

SS-260

SS-261

SS-262

SS-263

SS-264

SS-265

SS-266

SS-267

SS-268

SS-269

SS-270

SS-271

SS-272

SS-273

SS-274

SS-275

SS-276

SS-277

SS-278

SS-279

SS-280

SS-281

SS-282

SS-283

SS-284

SS-285

SS-286

SS-287

SS-288

SS-289

SS-290

SS-291

SS-292

SS-293

SS-294

SS-295

SS-296

SS-297

SS-298

SS-299

SS-300

SS-301

SS-302

SS-303

SS-304

SS-305

SS-306

SS-307

SS-308

SS-309

SS-310

SS-311

SS-312

SS-313

SS-314

SS-315

SS-316

SS-317

SS-318

SS-319

SS-320

SS-321

SS-322

SS-323

SS-324

SS-325

SS-326

SS-327

SS-328

SS-329

SS-330

SS-331

SS-332

SS-333

SS-334

SS-335

SS-336

SS-337

SS-338

SS-339

SS-340

SS-341

SS-342

SS-343

SS-344

SS-345

SS-346

SS-347

SS-348

SS-349

SS-350

SS-351

SS-352

SS-353

SS-354

SS-355

SS-356

SS-357

SS-358

SS-359

SS-360

SS-361

SS-362

SS-363

SS-364

SS-365

SS-366

SS-367

SS-368

SS-369

SS-370

SS-371

SS-372

SS-373

SS-374

SS-375

SS-376

SS-377

SS-378

SS-379

SS-380

SS-381

SS-382

SS-383

SS-384

SS-385

SS-386

SS-387

SS-388

SS-389

SS-390

SS-391

SS-392

SS-393

SS-394

SS-395

SS-396

SS-397

SS-398

SS-399

SS-400

SS-401

SS-402

SS-403

SS-404

SS-405

SS-406

SS-407

SS-408

SS-409

SS-410

SS-411

SS-412

SS-413

SS-414

SS-415

SS-416

SS-417

SS-418

SS-419

SS-420

SS-421

SS-422

SS-423

SS-424

SS-425

SS-426

SS-427

SS-428

SS-429

SS-430

SS-431

SS-432

SS-433

SS-434

SS-435

SS-436

SS-437

SS-438

SS-439

SS-440

SS-441

SS-442

SS-443

SS-444

SS-445

SS-446

SS-447

SS-448

SS-449

SS-450

SS-451

SS-452

SS-453

SS-454

SS-455

SS-456

SS-457

SS-458

SS-459

SS-460

SS-461

SS-462

SS-463

SS-464

SS-465

SS-466

SS-467

SS-468

SS-469

SS-470

SS-471

SS-472

SS-473

SS-474

SS-475

SS-476

SS-477

SS-478

SS-479

SS-480

SS-481

SS-482

SS-483

SS-484

SS-485

SS-486

SS-487

SS-488

SS-489

SS-490

SS-491

SS-492

SS-493

SS-494

SS-495

SS-496

SS-497

SS-498

SS-499

SS-500

SS-501

SS-502

SS-503

SS-504

SS-505

SS-506

SS-507

SS-508

SS-509

SS-510

SS-511

SS-512

SS-513

SS-514

SS-515

SS-516

SS-517

SS-518

SS-519

SS-520

SS-521

SS-522

SS-523

SS-524

SS-525

SS-526

SS-527

SS-528

SS-529

SS-530

SS-531

SS-532

SS-533

SS-534

SS-535

SS-536

SS-537

SS-538

SS-539

SS-540

SS-541

SS-542

SS-543

SS-544

SS-545

SS-546

SS-547

SS-548

SS-549

SS-550

SS-551

SS-552

SS-553

SS-554

SS-555

SS-556

SS-557

SS-558

SS-559

SS-560

SS-561

SS-562

SS-563

SS-564

SS-565

SS-566

SS-567

SS-568

SS-569

SS-570

SS-571

SS-572

SS-573

SS-574

SS-575

SS-576

SS-577

SS-578

SS-579

SS-580

SS-581

SS-582

SS-583

SS-584

SS-585

SS-586

SS-587

SS-588

SS-589

SS-590

SS-591

SS-592

SS-593

SS-594

SS-595

SS-596

SS-597

SS-598

SS-599

SS-600

SS-601

SS-602

SS-603

SS-604

SS-605

SS-606

SS-607

SS-608

SS-609

SS-610

SS-611

SS-612

SS-613

SS-614

SS-615

SS-616

SS-617

SS-618

SS-619

SS-620

SS-621

SS-622

SS-623

SS-624

SS-625

SS-626

SS-627

SS-628

SS-629

SS-630

SS-631

SS-632

SS-633

SS-634

SS-635

SS-636

SS-637

SS-638

SS-639

SS-640

SS-641

SS-642

SS-643

SS-644

SS-645

SS-646

SS-647

SS-648

SS-649

SS-650

SS-651

SS-652

SS-653

SS-654

SS-655

SS-656

SS-657

SS-658

SS-659

SS-660

SS-661

SS-662

SS-663

SS-664

SS-665

SS-666

SS-667

SS-668

SS-669

SS-670

SS-671

SS-672

SS-673

SS-674

SS-675

SS-676

SS-677

SS-678

SS-679

SS-680

SS-681

SS-682

SS-683

SS-684

SS-685

SS-686

SS-687

SS-688

SS-689

SS-690

SS-691

SS-692

SS-693

SS-694

SS-695

SS-696

SS-697

SS-698

SS-699

SS-700

SS-701

SS-702

SS-703

SS-704

SS-705

SS-706

SS-707

SS-708

SS-709

SS-710

SS-711

SS-712

SS-713

SS-714

SS-715

SS-716

SS-717

SS-718

SS-719

SS-720

SS-721

SS-722

SS-723

SS-724

SS-725

SS-726

SS-727

SS-728

SS-729

SS-730

SS-731

SS-732

SS-733

SS-734

SS-735

SS-736

SS-737

SS-738

SS-739

SS-740

SS-741

SS-742

SS-743

SS-744

SS-745

SS-746

SS-747

SS-748

SS-749

SS-750

SS-751

SS-752

SS-753

SS-754

SS-755

SS-756

SS-757

SS-758

SS-759

SS-760

SS-761

SS-762

SS-763

SS-764

SS-765

SS-766

SS-767

SS-768

SS-769

SS-770

SS-771

SS-772

SS-773

SS-774

SS-775

SS-776

SS-777

SS-778

SS-779

SS-780

SS-781

SS-782

SS-783

SS-784

SS-785

SS-786

SS-787

SS-788

SS-789

SS-790

SS-791

SS-792

SS-793

SS-794

SS-795

SS-796

SS-797

SS-798

SS-799

SS-800

SS-801

SS-802

SS-803

SS-804

SS-805

SS-806

SS-807

SS-808

SS-809

SS-810

SS-811

SS-812

SS-813

SS-814

SS-815

SS-816

SS-817

SS-818

SS-819

SS-820

SS-821

SS-822

SS-823

SS-824

SS-825

SS-826

SS-827

SS-828

SS-829

SS-830

SS-831

SS-832

SS-833

SS-834

SS-835

SS-836

SS-837

SS-838

SS-839

SS-840

SS-841

SS-842

SS-843

SS-844

SS-845

SS-846

SS-847

SS-848

SS-849

SS-850

SS-851

SS-852

SS-853

SS-854

SS-855

SS-856

SS-857

SS-858

SS-859

SS-860

SS-861

SS-862

SS-863

SS-864

SS-865

SS-866

SS-867

SS-868

SS-869

SS-870

SS-871

SS-872

SS-873

SS-874

SS-875

SS-876

SS-877

SS-878

SS-879

SS-880

SS-881

SS-882

SS-883

SS-884

SS-885

SS-886

SS-887

SS-888

SS-889

SS-890

SS-891

SS-892

SS-893

SS-894

SS-895

SS-896

SS-897

SS-898

SS-899

SS-900

SS-901

SS-902

SS-903

SS-904

SS-905

SS-906

SS-907

SS-908

SS-909

SS-910

SS-911

SS-912

SS-913

SS-914

SS-915

SS-916

SS-917

SS-918

SS-919

SS-920

SS-921

SS-922

SS-923

SS-924

SS-925

SS-926

SS-927

SS-928

SS-929

SS-930

SS-931

SS-932

SS-933

SS-934

SS-935

SS-936

SS-937

SS-938

SS-939

SS-940

SS-941

SS-942

SS-943

SS-944

SS-945

SS-946

SS-947

SS-948

SS-949

SS-950

SS-951

SS-952

SS-953

SS-954

SS-955

SS-956

SS-957

SS-958

SS-959

SS-960

SS-961

SS-962

SS-963

SS-964

SS-965

SS-966

SS-967

SS-968

SS-969

SS-970

SS-971

SS-972

SS-973

SS-974

SS-975

SS-976

SS-977

SS-978

SS-979

SS-980

SS-981

SS-982

SS-983

SS-984

SS-985

SS-986

SS-987

SS-988

SS-989

SS-990

SS-991

SS-992

SS-993

SS-994

SS-995

SS-996

SS-997

SS-998

SS-999

SS-1000

SS-1001

SS-1002

SS-1003

SS-1004

SS-1005

SS-1006

SS-1007

SS-1008

SS-1009

SS-1010

SS-1011

SS-1012

SS-1013

SS-1014

SS-1015

SS-1016

SS-1017

SS-1018

SS-1019

SS-1020

SS-1021

SS-1022

SS-1023

SS-1024

SS-1025

SS-1026

SS-1027

SS-1028

SS-1029

SS-1030

SS-1031

SS-1032

SS-1033

SS-1034

SS-1035

SS-1036

SS-1037

SS-1038

SS-1039

SS-1040

SS-1041

SS-1042

SS-1043

SS-1044

SS-1045

SS-1046

SS-1047

SS-1048

SS-1049

SS-1050

SS-1051

SS-1052

SS-1053

SS-1054

SS-1055

SS-1056

SS-1057

SS-1058

SS-1059

SS-1060

SS-1061

SS-1062

SS-1063

SS-1064

SS-1065

SS-1066

SS-1067

SS-1068

SS-1069

SS-1070

SS-1071

SS-1072

SS-1073

SS-1074

SS-1075

SS-1076

SS-1077

SS-1078

SS-1079

SS-1080

SS-1081

SS-1082

SS-1083

SS-1084

SS-1085

SS-1086

SS-1087

SS-1088

SS-1089

SS-1090

SS-1091

SS-1092

SS-1093

SS-1094

SS-1095

SS-1096

SS-1097

SS-1098

SS-1099

SS-1100

SS-1101

SS-1102

SS-1103

SS-1104

SS-1105

SS-1106

SS-1107

SS-1108

SS-1109

SS-1110

SS-1111

SS-1112

SS-1113

SS-1114

SS-1115

SS-1116

SS-1117

SS-1118

SS-1119

SS-1120

SS-1121

SS-1122

SS-1123

SS-1124

SS-1125

SS-1126

SS-1127

SS-1128

SS-1129

SS-1130

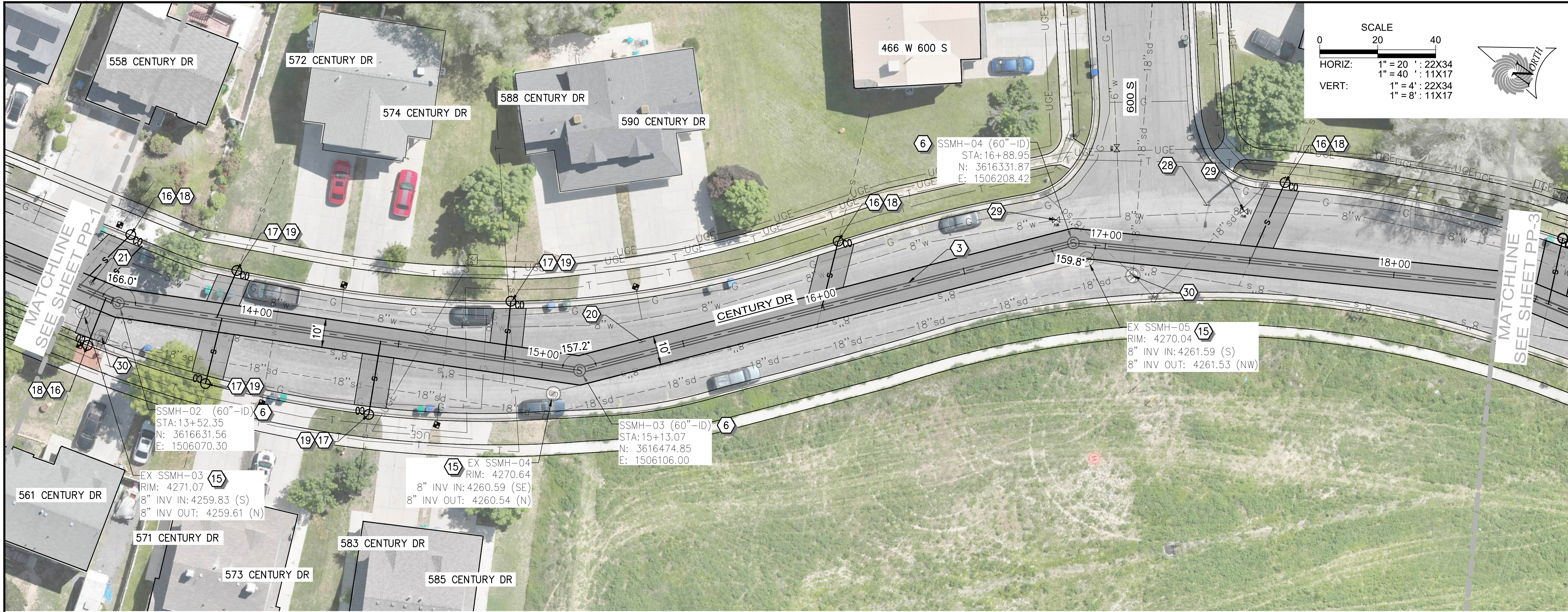
SS-1131

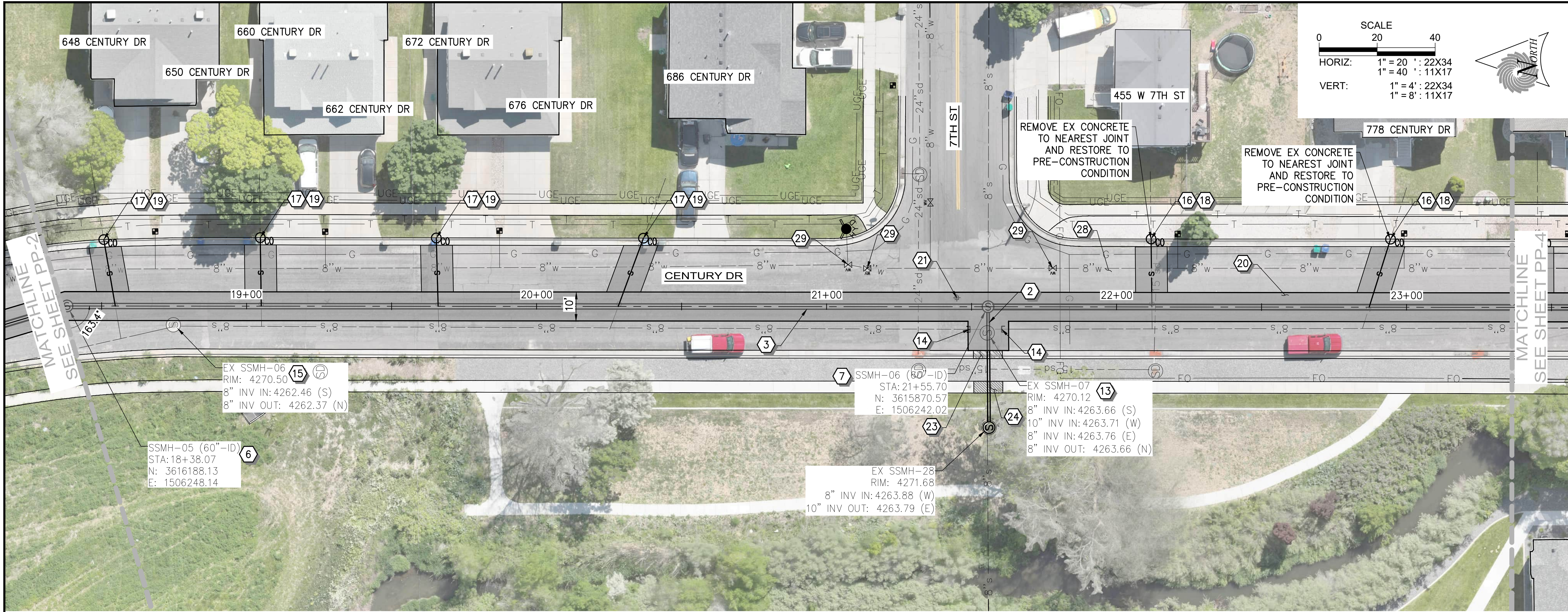
SS-1132

SS-1133

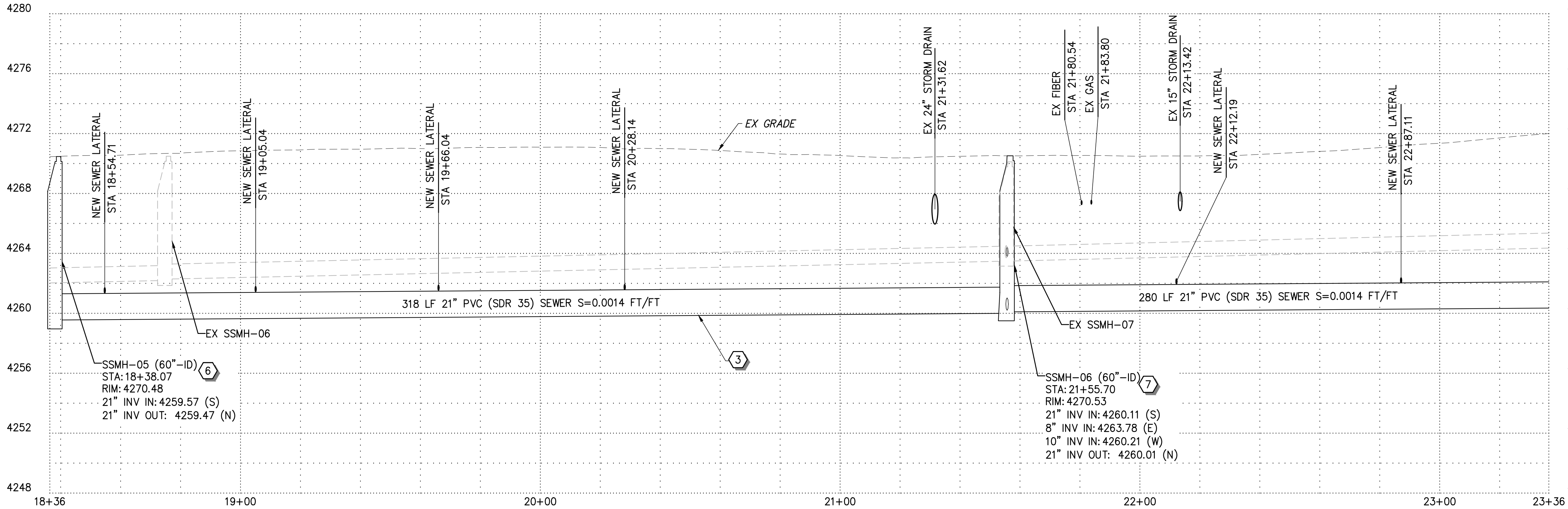
SS-1134

SS-





PLAN



PROFILE

CONSTRUCTION NOTES

- 1 8" PVC (SDR 35) SEWER PIPE
- 2 10" PVC (SDR 35) SEWER PIPE
- 3 21" PVC (SDR 35) SEWER PIPE
- 4 36" PVC (SDR 35) SEWER PIPE
- 5 CONNECT TO EXISTING MANHOLE
- 6 60" SEWER MANHOLE PRECAST
- 7 60" SEWER DROP MANHOLE PRECAST
- 8 72" SEWER MANHOLE PRECAST
- 9 84" SEWER MANHOLE PRECAST
- 10 60" SEWER MANHOLE POUR IN PLACE BASE
- 11 72" SEWER MANHOLE POUR IN PLACE BASE
- 12 REMOVE & DISPOSE EXISTING SEWER PIPE
- 13 REMOVE AND DISPOSE OF EXISTING MANHOLE
- 14 ABANDON EX SANITARY SEWER
- 15 ABANDON EX MANHOLE
- 16 4" PVC SEWER LATERAL
- 17 6" PVC SEWER LATERAL
- 18 4" CLEANOUT
- 19 6" CLEANOUT
- 20 REMOVE AND REPLACE WITH 6" ASPHALT
- 21 R&R SURVEY MONUMENT
- 22 RAISE AND COLLAR SURVEY MONUMENT
- 23 R&R CURB & GUTTER
- 24 R&R SIDE WALK
- 25 R&R FENCE
- 26 R&R UDOT PANELS
- 27 R&R UDOT CURB AND GUTTER
- 28 2" MILL AND OVERLAY
- 29 RAISE AND COLLAR EX WATER VALVE
- 30 RAISE AND COLLAR EX MANHOLE
- 31 REMOVE EX WATER VALVE

NOTE:
1. MAINTAIN ACCESS FOR REFUSE, DELIVERY SERVICES, AND FIRST RESPONDERS FOR ALL PROPERTIES AT ALL TIMES OF CONSTRUCTION.

REV NO.	COMMENT	DATE
2	ADDENDUM NO 3	02-13-26
1	ADDENDUM NO 1	02-10-26

PROFESSIONAL ENGINEER
02.13.26
No. 11099227
HUI
XIA
STATE OF UTAH

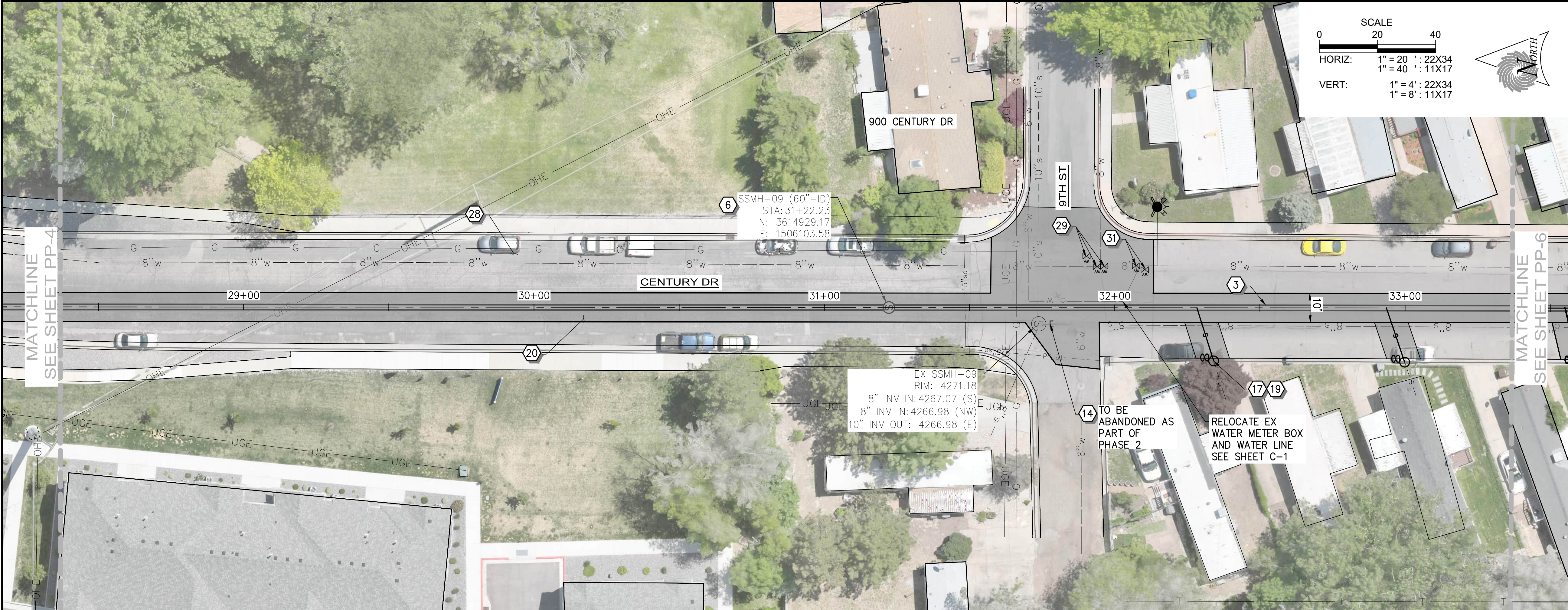
SUNRISE
ENGINEERING

6875 SOUTH 900 EAST
SALT LAKE CITY, UTAH 84047
TEL 801.523.0100 · FAX 801.523.0990
www.sunrise-eng.com

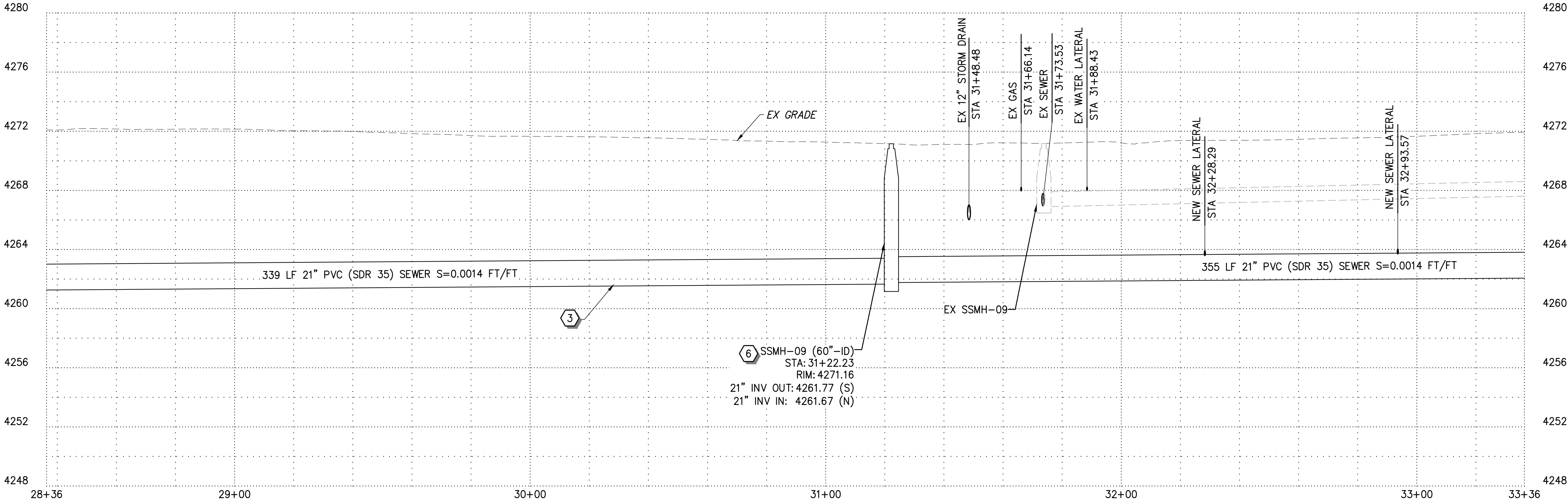
OGDEN CITY

12TH ST/CENTURY DR TRUNK LINE CAPACITY
PLAN AND PROFILE - III
STA 18+54 TO STA 23+54

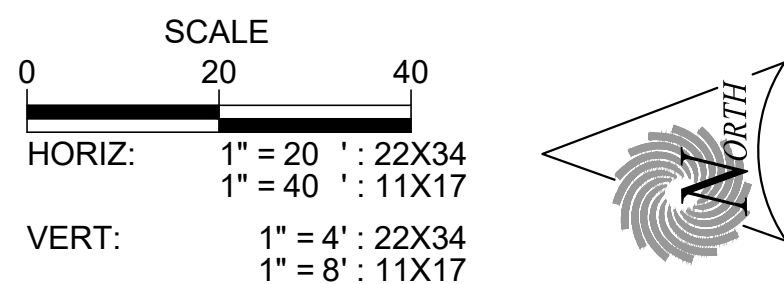
SEI NO.	DESIGNED	DRAWN	CHECKED	SHEET NO.	
15684	AX	MB	CL	8 of 18	PP3



PLAN



PROFILE



CONSTRUCTION NOTES

1

8" PVC (SDR 35) SEWER PIPE

2

10" PVC (SDR 35) SEWER PIPE

3

21" PVC (SDR 35) SEWER PIPE

4

36" PVC (SDR 35) SEWER PIPE

5

CONNECT TO EXISTING MANHOLE

6

60" SEWER MANHOLE PRECAST

7

60" SEWER DROP MANHOLE PRECAST

8

72" SEWER MANHOLE PRECAST

9

84" SEWER MANHOLE PRECAST

10

66" SEWER MANHOLE POUR IN PLACE BASE

11

72" SEWER MANHOLE POUR IN PLACE BASE

12

REMOVE & DISPOSE EXISTING SEWER PIPE

13

REMOVE AND DISPOSE OF EXISTING MANHOLE

14

ABANDON EX SANITARY SEWER

15

ABANDON EX MANHOLE

16

4" PVC SEWER LATERAL

17

6" PVC SEWER LATERAL

18

4" CLEANOUT

19

6" CLEANOUT

20

REMOVE AND REPLACE WITH 6" ASPHALT

21

R&R SURVEY MONUMENT

22

RAISE AND COLLAR SURVEY MONUMENT

23

R&R CURB & GUTTER

24

R&R SIDE WALK

25

R&R FENCE

26

R&R UDOT PANELS

27

R&R UDOT CURB AND GUTTER

28

2" MILL AND OVERLAY

29

RAISE AND COLLAR EX WATER VALVE

30

RAISE AND COLLAR EX MANHOLE

31

REMOVE EX WATER VALVE

SS-1

SS-2

SS-3

SS-4

SS-5

SS-6

SS-7

SS-8

SS-9

SS-10

SS-11

SS-12

SS-13

SS-14

SS-15

SS-16

SS-17

SS-18

SS-19

SS-20

SS-21

SS-22

SS-23

SS-24

SS-25

SS-26

SS-27

SS-28

SS-29

SS-30

SS-31

SS-32

SS-33

SS-34

SS-35

SS-36

SS-37

SS-38

SS-39

SS-40

SS-41

SS-42

SS-43

SS-44

SS-45

SS-46

SS-47

SS-48

SS-49

SS-50

SS-51

SS-52

SS-53

SS-54

SS-55

SS-56

SS-57

SS-58

SS-59

SS-60

SS-61

SS-62

SS-63

SS-64

SS-65

SS-66

SS-67

SS-68

SS-69

SS-70

SS-71

SS-72

SS-73

SS-74

SS-75

SS-76

SS-77

SS-78

SS-79

SS-80

SS-81

SS-82

SS-83

SS-84

SS-85

SS-86

SS-87

SS-88

SS-89

SS-90

SS-91

SS-92

SS-93

SS-94

SS-95

SS-96

SS-97

SS-98

SS-99

SS-100

SS-101

SS-102

SS-103

SS-104

SS-105

SS-106

SS-107

SS-108

SS-109

SS-110

SS-111

SS-112

SS-113

SS-114

SS-115

SS-116

SS-117

SS-118

SS-119

SS-120

SS-121

SS-122

SS-123

SS-124

SS-125

SS-126

SS-127

SS-128

SS-129

SS-130

SS-131

SS-132

SS-133

SS-134

SS-135

SS-136

SS-137

SS-138

SS-139

SS-140

SS-141

SS-142

SS-143

SS-144

SS-145

SS-146

SS-147

SS-148

SS-149

SS-150

SS-151

SS-152

SS-153

SS-154

SS-155

SS-156

SS-157

SS-158

SS-159

SS-160

SS-161

SS-162

SS-163

SS-164

SS-165

SS-166

SS-167

SS-168

SS-169

SS-170

SS-171

SS-172

SS-173

SS-174

SS-175

SS-176

SS-177

SS-178

SS-179

SS-180

SS-181

SS-182

SS-183

SS-184

SS-185

SS-186

SS-187

SS-188

SS-189

SS-190

SS-191

SS-192

SS-193

SS-194

SS-195

SS-196

SS-197

SS-198

SS-199

SS-200

SS-201

SS-202

SS-203

SS-204

SS-205

SS-206

SS-207

SS-208

SS-209

SS-210

SS-211

SS-212

SS-213

SS-214

SS-215

SS-216

SS-217

SS-218

SS-219

SS-220

SS-221

SS-222

SS-223

SS-224

SS-225

SS-226

SS-227

SS-228

SS-229

SS-230

SS-231

SS-232

SS-233

SS-234

SS-235

SS-236

SS-237

SS-238

SS-239

SS-240

SS-241

SS-242

SS-243

SS-244

SS-245

SS-246

SS-247

SS-248

SS-249

SS-250

SS-251

SS-252

SS-253

SS-254

SS-255

SS-256

SS-257

SS-258

SS-259

SS-260

SS-261

SS-262

SS-263

SS-264

SS-265

SS-266

SS-267

SS-268

SS-269

SS-270

SS-271

SS-272

SS-273

SS-274

SS-275

SS-276

SS-277

SS-278

SS-279

SS-280

SS-281

SS-282

SS-283

SS-284

SS-285

SS-286

SS-287

SS-288

SS-289

SS-290

SS-291

SS-292

SS-293

SS-294

SS-295

SS-296

SS-297

SS-298

SS-299

SS-300

SS-301

SS-302

SS-303

SS-304

SS-305

SS-306

SS-307

SS-308

SS-309

SS-310

SS-311

SS-312

SS-313

SS-314

SS-315

SS-316

SS-317

SS-318

SS-319

SS-320

SS-321

SS-322

SS-323

SS-324

SS-325

SS-326

SS-327

SS-328

SS-329

SS-330

SS-331

SS-332

SS-333

SS-334

SS-335

SS-336

SS-337

SS-338

SS-339

SS-340

SS-341

SS-342

SS-343

SS-344

SS-345

SS-346

SS-347

SS-348

SS-349

SS-350

SS-351

SS-352

SS-353

SS-354

SS-355

SS-356

SS-357

SS-358

SS-359

SS-360

SS-361

SS-362

SS-363

SS-364

SS-365

SS-366

SS-367

SS-368

SS-369

SS-370

SS-371

SS-372

SS-373

SS-374

SS-375

SS-376

SS-377

SS-378

SS-379

SS-380

SS-381

SS-382

SS-383

SS-384

SS-385

SS-386

SS-387

SS-388

SS-389

SS-390

SS-391

SS-392

SS-393

SS-394

SS-395

SS-396

SS-397

SS-398

SS-399

SS-400

SS-401

SS-402

SS-403

SS-404

SS-405

SS-406

SS-407

SS-408

SS-409

SS-410

SS-411

SS-412

SS-413

SS-414

SS-415

SS-416

SS-417

SS-418

SS-419

SS-420

SS-421

SS-422

SS-423

SS-424

SS-425

SS-426

SS-427

SS-428

SS-429

SS-430

SS-431

SS-432

SS-433

SS-434

SS-435

SS-436

SS-437

SS-438

SS-439

SS-440

SS-441

SS-442

SS-443

SS-444

SS-445

SS-446

SS-447

SS-448

SS-449

SS-450

SS-451

SS-452

SS-453

SS-454

SS-455

SS-456

SS-457

SS-458

SS-459

SS-460

SS-461

SS-462

SS-463

SS-464

SS-465

SS-466

SS-467

SS-468

SS-469

SS-470

SS-471

SS-472

SS-473

SS-474

SS-475

SS-476

SS-477

SS-478

SS-479

SS-480

SS-481

SS-482

SS-483

SS-484

SS-485

SS-486

SS-487

SS-488

SS-489

SS-490

SS-491

SS-492

SS-493

SS-494

SS-495

SS-496

SS-497

SS-498

SS-499

SS-500

SS-501

SS-502

SS-503

SS-504

SS-505

SS-506

SS-507

SS-508

SS-509

SS-510

SS-511

SS-512

SS-513

SS-514

SS-515

SS-516

SS-517

SS-518

SS-519

SS-520

SS-521

SS-522

SS-523

SS-524

SS-525

SS-526

SS-527

SS-528

SS-529

SS-530

SS-531

SS-532

SS-533

SS-534

SS-535

SS-536

SS-537

SS-538

SS-539

SS-540

SS-541

SS-542

SS-543

SS-544

SS-545

SS-546

SS-547

SS-548

SS-549

SS-550

SS-551

SS-552

SS-553

SS-554

SS-555

SS-556

SS-557

SS-558

SS-559

SS-560

SS-561

SS-562

SS-563

SS-564

SS-565

SS-566

SS-567

SS-568

SS-569

SS-570

SS-571

SS-572

SS-573

SS-574

SS-575

SS-576

SS-577

SS-578

SS-579

SS-580

SS-581

SS-582

SS-583

SS-584

SS-585

SS-586

SS-587

SS-588

SS-589

SS-590

SS-591

SS-592

SS-593

SS-594

SS-595

SS-596

SS-597

SS-598

SS-599

SS-600

SS-601

SS-602

SS-603

SS-604

SS-605

SS-606

SS-607

SS-608

SS-609

SS-610

SS-611

SS-612

SS-613

SS-614

SS-615

SS-616

SS-617

SS-618

SS-619

SS-620

SS-621

SS-622

SS-623

SS-624

SS-625

SS-626

SS-627

SS-628

SS-629

SS-630

SS-631

SS-632

SS-633

SS-634

SS-635

SS-636

SS-637

SS-638

SS-639

SS-640

SS-641

SS-642

SS-643

SS-644

SS-645

SS-646

SS-647

SS-648

SS-649

SS-650

SS-651

SS-652

SS-653

SS-654

SS-655

SS-656

SS-657

SS-658

SS-659

SS-660

SS-661

SS-662

SS-663

SS-664

SS-665

SS-666

SS-667

SS-668

SS-669

SS-670

SS-671

SS-672

SS-673

SS-674

SS-675

SS-676

SS-677

SS-678

SS-679

SS-680

SS-681

SS-682

SS-683

SS-684

SS-685

SS-686

SS-687

SS-688

SS-689

SS-690

SS-691

SS-692

SS-693

SS-694

SS-695

SS-696

SS-697

SS-698

SS-699

SS-700

SS-701

SS-702

SS-703

SS-704

SS-705

SS-706

SS-707

SS-708

SS-709

SS-710

SS-711

SS-712

SS-713

SS-714

SS-715

SS-716

SS-717

SS-718

SS-719

SS-720

SS-721

SS-722

SS-723

SS-724

SS-725

SS-726

SS-727

SS-728

SS-729

SS-730

SS-731

SS-732

SS-733

SS-734

SS-735

SS-736

SS-737

SS-738

SS-739

SS-740

SS-741

SS-742

SS-743

SS-744

SS-745

SS-746

SS-747

SS-748

SS-749

SS-750

SS-751

SS-752

SS-753

SS-754

SS-755

SS-756

SS-757

SS-758

SS-759

SS-760

SS-761

SS-762

SS-763

SS-764

SS-765

SS-766

SS-767

SS-768

SS-769

SS-770

SS-771

SS-772

SS-773

SS-774

SS-775

SS-776

SS-777

SS-778

SS-779

SS-780

SS-781

SS-782

SS-783

SS-784

SS-785

SS-786

SS-787

SS-788

SS-789

SS-790

SS-791

SS-792

SS-793

SS-794

SS-795

SS-796

SS-797

SS-798

SS-799

SS-800

SS-801

SS-802

SS-803

SS-804

SS-805

SS-806

SS-807

SS-808

SS-809

SS-810

SS-811

SS-812

SS-813

SS-814

SS-815

SS-816

SS-817

SS-818

SS-819

SS-820

SS-821

SS-822

SS-823

SS-824

SS-825

SS-826

SS-827

SS-828

SS-829

SS-830

SS-831

SS-832

SS-833

SS-834

SS-835

SS-836

SS-837

SS-838

SS-839

SS-840

SS-841

SS-842

SS-843

SS-844

SS-845

SS-846

SS-847

SS-848

SS-849

SS-850

SS-851

SS-852

SS-853

SS-854

SS-855

SS-856

SS-857

SS-858

SS-859

SS-860

SS-861

SS-862

SS-863

SS-864

SS-865

SS-866

SS-867

SS-868

SS-869

SS-870

SS-871

SS-872

SS-873

SS-874

SS-875

SS-876

SS-877

SS-878

SS-879

SS-880

SS-881

SS-882

SS-883

SS-884

SS-885

SS-886

SS-887

SS-888

SS-889

SS-890

SS-891

SS-892

SS-893

SS-894

SS-895

SS-896

SS-897

SS-898

SS-899

SS-900

SS-901

SS-902

SS-903

SS-904

SS-905

SS-906

SS-907

SS-908

SS-909

SS-910

SS-911

SS-912

SS-913

SS-914

SS-915

SS-916

SS-917

SS-918

SS-919

SS-920

SS-921

SS-922

SS-923

SS-924

SS-925

SS-926

SS-927

SS-928

SS-929

SS-930

SS-931

SS-932

SS-933

SS-934

SS-935

SS-936

SS-937

SS-938

SS-939

SS-940

SS-941

SS-942

SS-943

SS-944

SS-945

SS-946

SS-947

SS-948

SS-949

SS-950

SS-951

SS-952

SS-953

SS-954

SS-955

SS-956

SS-957

SS-958

SS-959

SS-960

SS-961

SS-962

SS-963

SS-964

SS-965

SS-966

SS-967

SS-968

SS-969

SS-970

SS-971

SS-972

SS-973

SS-974

SS-975

SS-976

SS-977

SS-978

SS-979

SS-980

SS-981

SS-982

SS-983

SS-984

SS-985

SS-986

SS-987

SS-988

SS-989

SS-990

SS-991

SS-992

SS-993

SS-994

SS-995

SS-996

SS-997

SS-998

SS-999

SS-1000

SS-1001

SS-1002

SS-1003

SS-1004

SS-1005

SS-1006

SS-1007

SS-1008

SS-1009

SS-1010

SS-1011

SS-1012

SS-1013

SS-1014

SS-1015

SS-1016

SS-1017

SS-1018

SS-1019

SS-1020

SS-1021

SS-1022

SS-1023

SS-1024

SS-1025

SS-1026

SS-1027

SS-1028

SS-1029

SS-1030

SS-1031

SS-1032

SS-1033

SS-1034

SS-1035

SS-1036

SS-1037

SS-1038

SS-1039

SS-1040

SS-1041

SS-1042

SS-1043

SS-1044

SS-1045

SS-1046

SS-1047

SS-1048

SS-1049

SS-1050

SS-1051

SS-1052

SS-1053

SS-1054

SS-1055

SS-1056

SS-1057

SS-1058

SS-1059

SS-1060

SS-1061

SS-1062

SS-1063

SS-1064

SS-1065

SS-1066

SS-1067

SS-1068

SS-1069

SS-1070

SS-1071

SS-1072

SS-1073

SS-1074

SS-1075

SS-1076

SS-1077

SS-1078

SS-1079

SS-1080

SS-1081

SS-1082

SS-1083

SS-1084

SS-1085

SS-1086

SS-1087

SS-1088

SS-1089

SS-1090

SS-1091

SS-1092

SS-1093

SS-1094

SS-1095

SS-1096

SS-1097

SS-1098

SS-1099

SS-1100

SS-1101

SS-1102

SS-1103

SS-1104

SS-1105

SS-1106

SS-1107

SS-1108

SS-1109

SS-1110

SS-1111

SS-1112

SS-1113

SS-1114

SS-1115

SS-1116

SS-1117

SS-1118

SS-1119

SS-1120

SS-1121

SS-1122

SS-1123

SS-1124

SS-1125

SS-1126

SS-1127

SS-1128

SS-1129

SS-1130

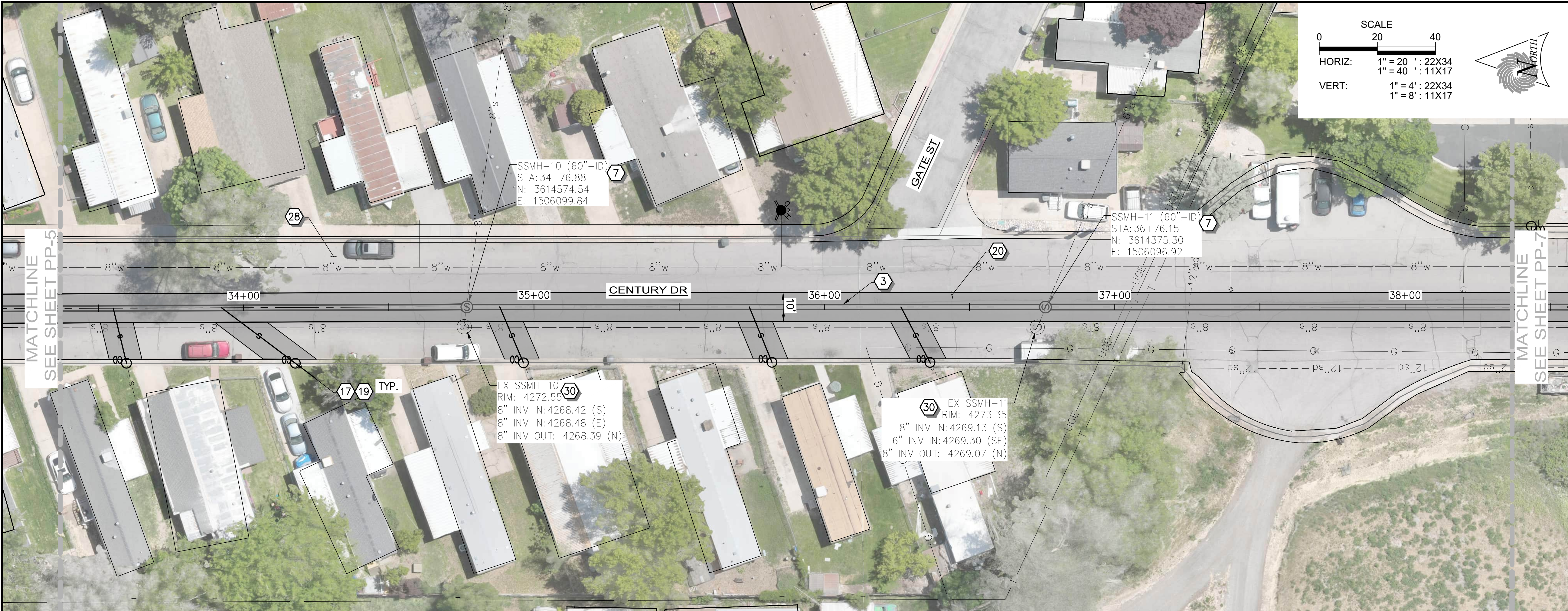
SS-1131

SS-1132

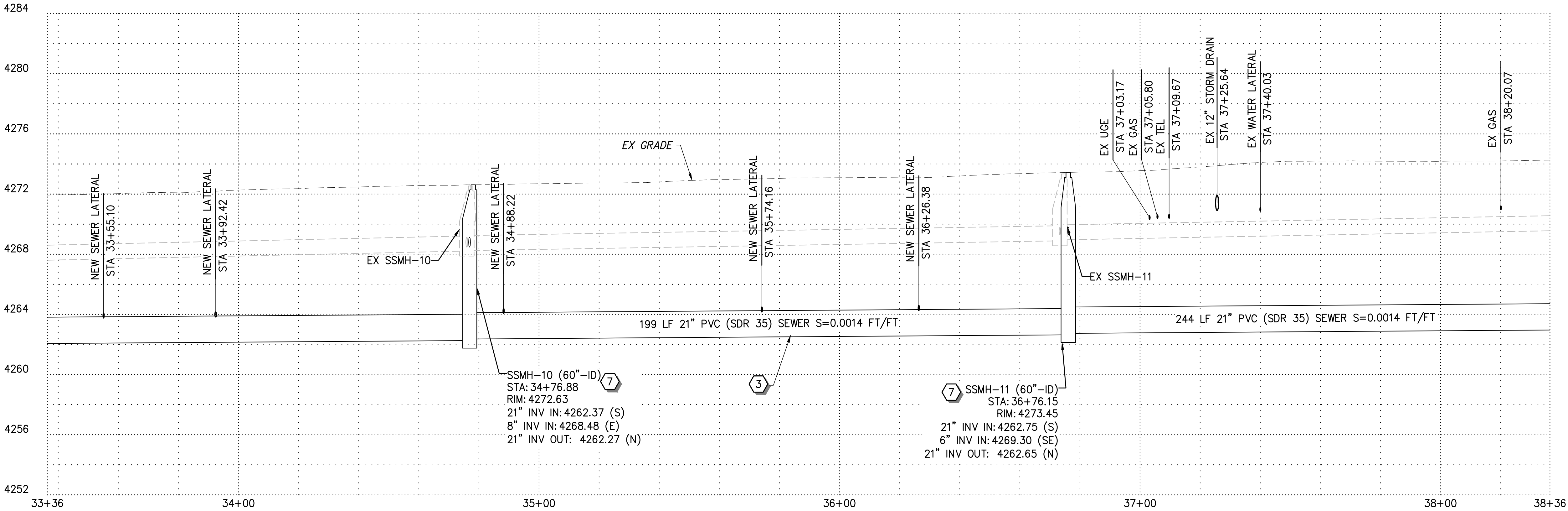
SS-1133

SS-1134

SS-1135



PLAN



PROFILE

CONSTRUCTION NOTES

1

8" PVC (SDR 35) SEWER PIPE

2

10" PVC (SDR 35) SEWER PIPE

3

21" PVC (SDR 35) SEWER PIPE

4

36" PVC (SDR 35) SEWER PIPE

5

CONNECT TO EXISTING MANHOLE

6

60" SEWER MANHOLE PRECAST

7

60" SEWER DROP MANHOLE PRECAST

8

72" SEWER MANHOLE PRECAST

9

84" SEWER MANHOLE PRECAST

10

60" SEWER MANHOLE POUR IN PLACE BASE

11

72" SEWER MANHOLE POUR IN PLACE BASE

12

REMOVE & DISPOSE EXISTING SEWER PIPE

13

REMOVE AND DISPOSE OF EXISTING MANHOLE

14

ABANDON EX SANITARY SEWER

15

ABANDON EX MANHOLE

16

4" PVC SEWER LATERAL

17

6" PVC SEWER LATERAL

18

4" CLEANOUT

19

6" CLEANOUT

20

REMOVE AND REPLACE WITH 6" ASPHALT

21

R&R SURVEY MONUMENT

22

RAISE AND COLLAR SURVEY MONUMENT

23

R&R CURB & GUTTER

24

R&R SIDE WALK

25

R&R FENCE

26

R&R UDOT PANELS

27

R&R UDOT CURB AND GUTTER

28

2" MILL AND OVERLAY

29

RAISE AND COLLAR EX WATER VALVE

30

RAISE AND COLLAR EX MANHOLE

31

REMOVE EX WATER VALVE

NOTE:
1. MAINTAIN ACCESS FOR REFUSE, DELIVERY SERVICES, AND FIRST RESPONDERS FOR ALL PROPERTIES AT ALL TIMES OF CONSTRUCTION.

2

ADDENDUM NO 3

1

ADDENDUM NO 1

02.13.26

No. 11099227

HUI

XIA

SUNRISE ENGINEERING

6875 SOUTH 900 EAST
SALT LAKE CITY, UTAH 84047
TEL 801.523.0100 • FAX 801.523.0990
www.sunrise-eng.com

OGDEN CITY

12TH ST/CENTURY DR TRUNK LINE CAPACITY
PLAN AND PROFILE – VI
STA 33+54 TO STA 38+54

SEI NO.
15684

DESIGNED
AX

DRAWN
MB

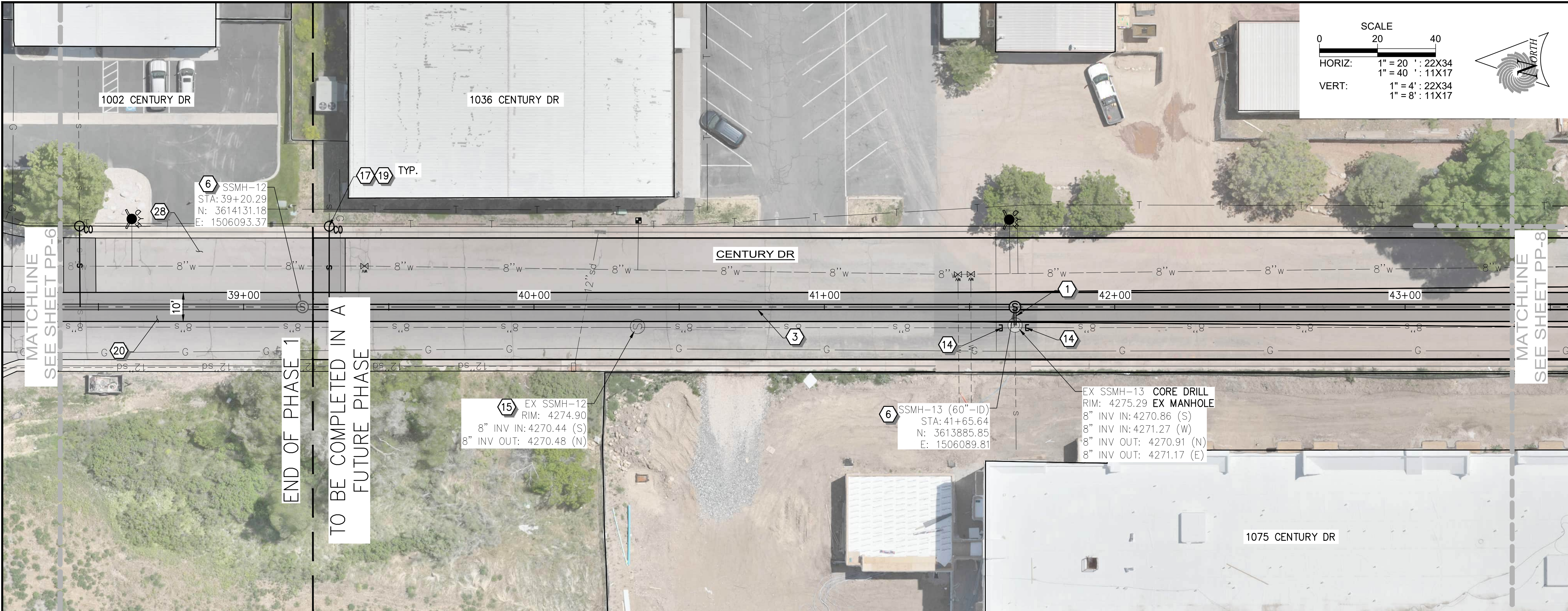
CHECKED
CL

SHEET NO.
11 of 18

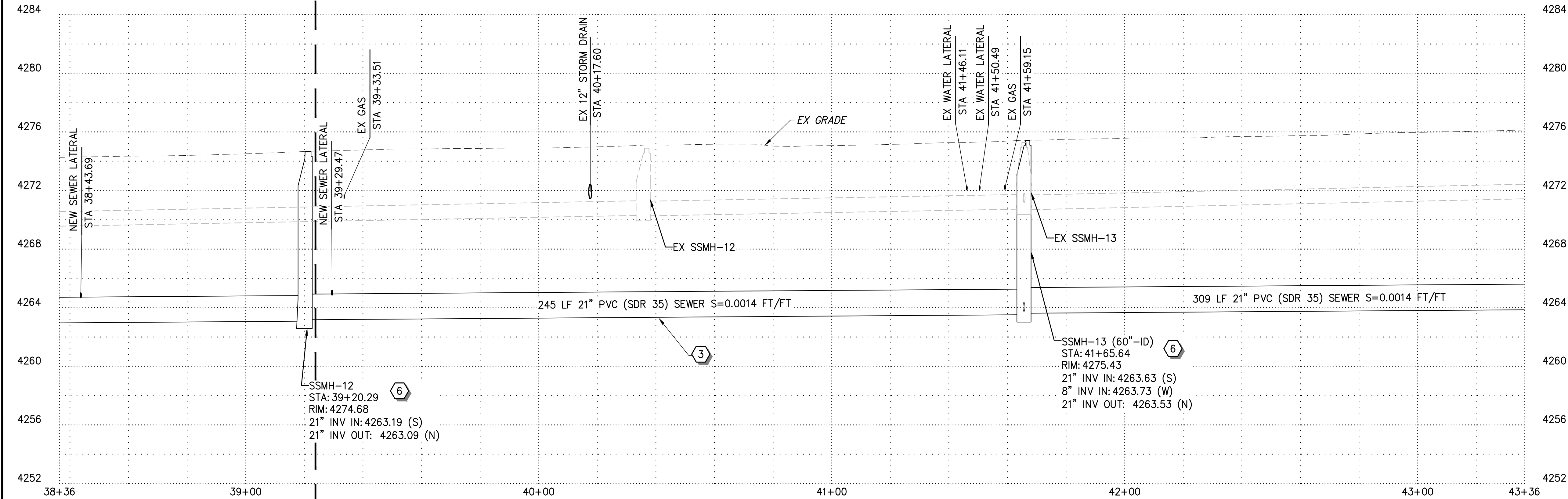
PP6

ISSUED FOR BID

P:\Ogden City\15684 12th St Sewer\08 Dwg\Sheets\Phase 1\21thss PP.dwg Feb 13, 2026 11:30am mitchellbramble



PLAN



PROFILE

CONSTRUCTION NOTES

- 8" PVC (SDR 35) SEWER PIPE
- 10" PVC (SDR 35) SEWER PIPE
- 21" PVC (SDR 35) SEWER PIPE
- 36" PVC (SDR 35) SEWER PIPE
- CONNECT TO EXISTING MANHOLE
- 60" SEWER MANHOLE PRECAST
- 60" SEWER DROP MANHOLE PRECAST
- 72" SEWER MANHOLE PRECAST
- 84" SEWER MANHOLE PRECAST
- 60" SEWER MANHOLE POUR IN PLACE BASE
- 72" SEWER MANHOLE POUR IN PLACE BASE
- REMOVE & DISPOSE EXISTING SEWER PIPE
- REMOVE AND DISPOSE OF EXISTING MANHOLE
- ABANDON EX SANITARY SEWER
- ABANDON EX MANHOLE
- 4" PVC SEWER LATERAL
- 6" PVC SEWER LATERAL
- 4" CLEANOUT
- 6" CLEANOUT
- REMOVE AND REPLACE WITH 6" ASPHALT
- R&R SURVEY MONUMENT
- RAISE AND COLLAR SURVEY MONUMENT
- R&R CURB & GUTTER
- R&R SIDE WALK
- R&R FENCE
- R&R UDOT PANELS
- R&R UDOT CURB AND GUTTER
- 2" MILL AND OVERLAY
- RAISE AND COLLAR EX WATER VALVE
- RAISE AND COLLAR EX MANHOLE
- REMOVE EX WATER VALVE

NOTE:
1. MAINTAIN ACCESS FOR REFUSE, DELIVERY SERVICES, AND FIRST RESPONDERS FOR ALL PROPERTIES AT ALL TIMES OF CONSTRUCTION.

REV NO.	COMMENT	DATE
2	ADDENDUM NO 3	02-13-26
1	ADDENDUM NO 1	02-10-26

PROFESSIONAL ENGINEER
02.13.26
No. 11099227
HUI
XIA
STATE OF UTAH

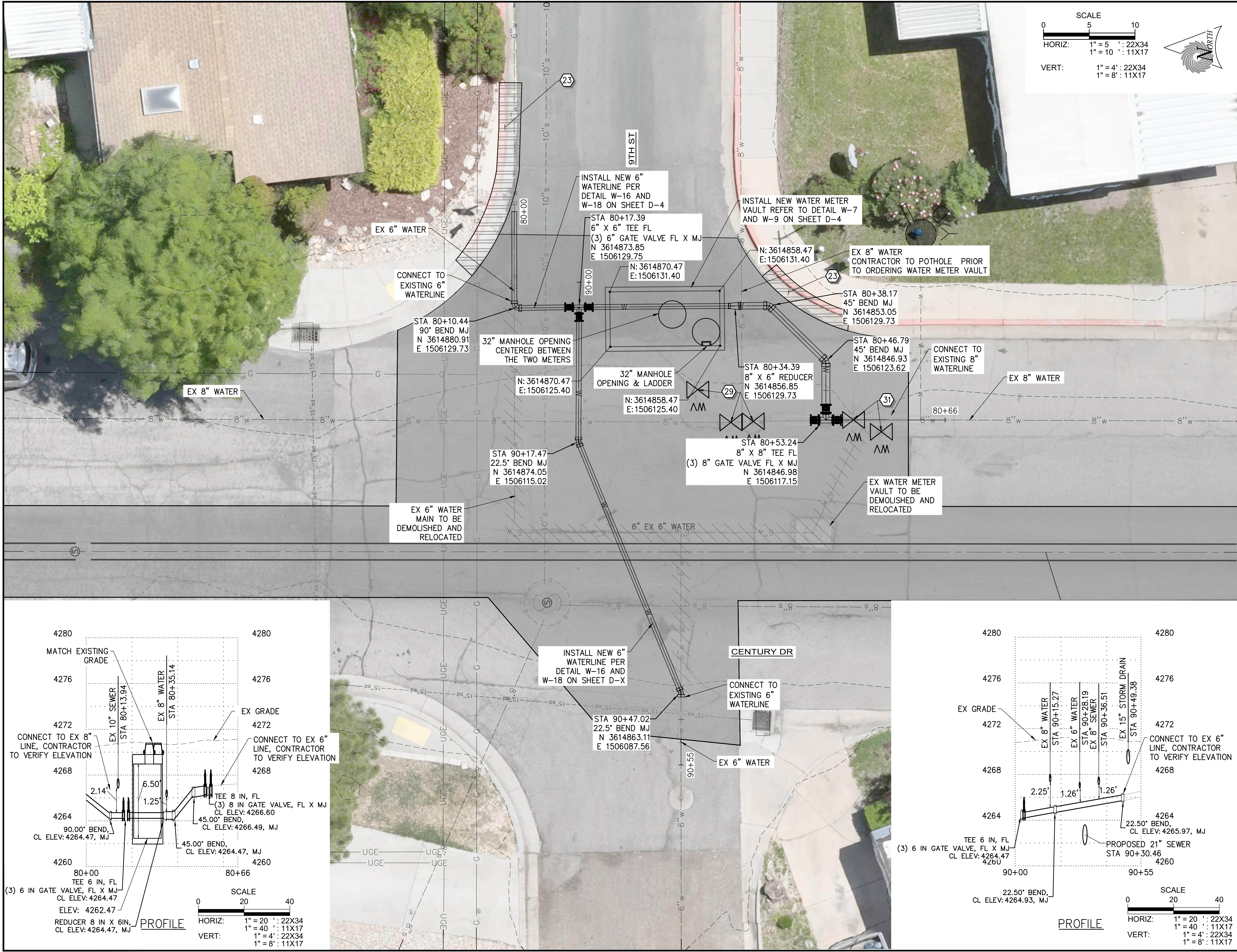
SUNRISE
ENGINEERING

6875 SOUTH 900 EAST
SALT LAKE CITY, UTAH 84047
TEL 801.523.0100 • FAX 801.523.0990
www.sunrise-eng.com

OGDEN CITY

12TH ST/CENTURY DR TRUNK LINE CAPACITY
PLAN AND PROFILE - VII
STA 38+54 TO STA 43+54

SEI NO.	DESIGNED	DRAWN	CHECKED	SHEET NO.	
15684	AX	MB	CL	12 of 18	PP7



CONSTRUCTION NOTES

1

8" PVC (SDR 35) SEWER PIPE

2

10" PVC (SDR 35) SEWER PIPE

3

21" PVC (SDR 35) SEWER PIPE

4

36" PVC (SDR 35) SEWER PIPE

5

CONNECT TO EXISTING MANHOLE

6

60" SEWER MANHOLE PRECAST

7

60" SEWER DROP MANHOLE PRECAST

8

72" SEWER MANHOLE PRECAST

9

84" SEWER MANHOLE PRECAST

10

60" SEWER MANHOLE POUR IN PLACE BASE

11

72" SEWER MANHOLE POUR IN PLACE BASE

12

REMOVE & DISPOSE EXISTING SEWER PIPE

13

REMOVE AND DISPOSE OF EXISTING MANHOLE

14

ABANDON EX SANITARY SEWER

15

ABANDON EX MANHOLE

16

4" PVC SEWER LATERAL

17

6" PVC SEWER LATERAL

18

4" CLEANOUT

19

6" CLEANOUT

20

REMOVE AND REPLACE WITH 6" ASPHALT

21

R&R SURVEY MONUMENT

22

RAISE AND COLLAR SURVEY MONUMENT

23

R&R CURB & GUTTER

24

R&R SIDE WALK

25

R&R FENCE

26

R&R UDOT PANELS

27

R&R UDOT CURB AND GUTTER

28

2" MILL AND OVERLAY

29

RAISE AND COLLAR EX WATER VALVE

30

RAISE AND COLLAR EX MANHOLE

31

REMOVE EX WATER VALVE

NOTE:

1. MAINTAIN ACCESS FOR REFUSE, DELIVERY SERVICES, AND FIRST RESPONDERS FOR ALL PROPERTIES AT ALL TIMES OF CONSTRUCTION.

REV NO.	COMMENT	DATE
2	ADDENDUM NO 3	02-13-26
1	ADDENDUM NO 1	02-10-26

PROFESSIONAL ENGINEER

02.13.26

No. 11099227

HUI

XIA

STATE OF UTAH

SUNRISE

ENGINEERING

6875 SOUTH 900 EAST

SALT LAKE CITY, UTAH 84047

TEL 801.523.0100 · FAX 801.523.0990

www.sunrise-eng.com

OGDEN CITY

12TH ST/CENTURY DR TRUNK LINE CAPACITY

UTILITY RELOCATION PLAN

SEI NO.	DESIGNED	DRAWN	CHECKED	SHEET NO.
15684	AX	MB	CL	19 of 29

C-1

ISSUED FOR BID

P:\Ogden City\15684 12th St Sewer\08 Dwg\Sheets\Phase 1\2thas-C-1.dwg Feb 13, 2026 11:31am mitchell.bramble